

## Environment

### *Climate*

**D**aviess County has a temperate climate that is favorable for supporting a variety of plant and animal life. Summers are generally warm and humid, and winters are moderately cold. Characteristic of all seasons are changes brought about by passing weather fronts and by the associated centers of high and low pressure.

Between moderately cold winters and warm summers, the county experiences a wide temperature fluctuation. The annual mean temperature is 56.5 degrees Fahrenheit, with extremes of 107 degrees in 1936, 1944 and 2012, and a low of minus 23 degrees in 1994. In the winter, an average temperature of 35.3 degrees can be expected, and in the summer 76.3 is an anticipated average. Temperatures are generally highest in July and August, and lowest in January. July temperatures vary less than other months of the year. They vary most in January.

Precipitation is usually fairly well distributed throughout the year.. The average annual rainfall for Daviess County is 44.27 inches. In most years, however, October is the month when the least precipitation is received, and March usually has the most. This average annual rainfall is generally adequate for farm crops to be grown successfully; however, droughts do occur. As an example, the average precipitation for the month of June is 3.7 inches. During periods of drought, occurring about one year in ten, less than 1.0 inch of rainfall is received in June. Also, during 1 year in 10, more than 7.3 inches of rainfall is received in June. During these periods of drought or excess rain, crop yields are occasionally reduced.

### *Solar Access*

As our limited supplies of fossil fuels become further depleted, the potential for solar energy and orientation may demand more of our time and effort. An increase in our awareness of solar issues now will help us lay the ground rules for the solar access, orientation, and compatible building designs that will be appreciated for generations to follow.

Planning for solar at the subdivision development stage would greatly increase solar potential and cut the costs for its installation.

### *Land Conditions*

Owensboro is located on the Ohio River, in the western part of the state of Kentucky. According to *Housing Market Analysis*, Owensboro's regional relationship to other cities and major urban areas is:

## ENVIRONMENT

◆ Evansville, Indiana	- 40 miles
◆ Louisville, Kentucky	- 109 miles
◆ Nashville, Tennessee	- 135 miles
◆ St. Louis, Missouri	- 164 miles
◆ Lexington, Kentucky	- 170 miles
◆ Indianapolis, Indiana	- 200 miles
◆ Cincinnati, Ohio	- 210 miles

### Topography

Based upon an environmental analysis presented in *Alpha* (1974), Daviess County is located on the northern fringes of the Western Coal Field physiographic region. The 476 square miles of Daviess County are bounded on the north by a large southward bend of the Ohio River and in other directions by fertile and productive land devoted chiefly to agriculture. Elevations range from 358 feet at the normal pool level of the Ohio River to 550 feet at Bon Harbor Hills. A 410-foot contour bisects the southern quarter of Owensboro and delineates the separation of the Ohio River Basin and the Panther Creek Basin.

The primary physiographic characteristic of the region is the rolling, somewhat hilly topography, cut by flat alluvium-filled valleys along major stream systems. The bedrock geology found in the outer portions of Daviess County creates a topographic landscape variable in its form, changing from flat to gently rolling to hilly.

The county's land area of 476 square miles is divided into three basic drainage areas. The Owensboro area is situated on the left bank of the Ohio River on a flat expanse of land that differs from most river communities in one important respect. While most river cities drain directly to the parent river, most of the Owensboro perimeter drains to the south and southwest through very flat channels to Panther Creek; thence to the Green River and finally into the Ohio River. The relationship of the Ohio River, Green River, and Panther Creek drainage basins of the Owensboro area is of major importance.

Generally, water runoff north of the separation line between the Ohio River and Panther Creek basins will flow northward to the Ohio River with most of this water being intercepted by the city's combined sewer system. Runoff south of this break line flows southward toward Panther Creek. This topography is a significant factor in the area's inability to carry away the runoff. Deficient drainage channels and the backwater from the Green River also contribute to this serious situation.

### Geology

According to information obtained from *Alpha* (1974), the physical geologic structure in Daviess County consists primarily of two physiographic units. One is of surficial geology, such as quaternary alluvium, lacustrine and outwash deposits. And, the other is of bedrock geology in the form of the Pennsylvanian age, such as Lisman, Carbondale and Tradewater geologic formations.

Daviess County is underlain by rocks of the Pleistocene and Recent Age. These rocks are primarily made up of sandstones, shales and coals. Naturally, the principal mineral resource in the County is coal. It has been mined in the western, southern, and eastern portions of the county. Petroleum in decreasing quantities and some small amounts of natural gas have been produced from shallow Chester (upper Mississippian) sands in the county, primarily in the Eastern and Southern parts, in the vicinity of Whitesville and Utica.

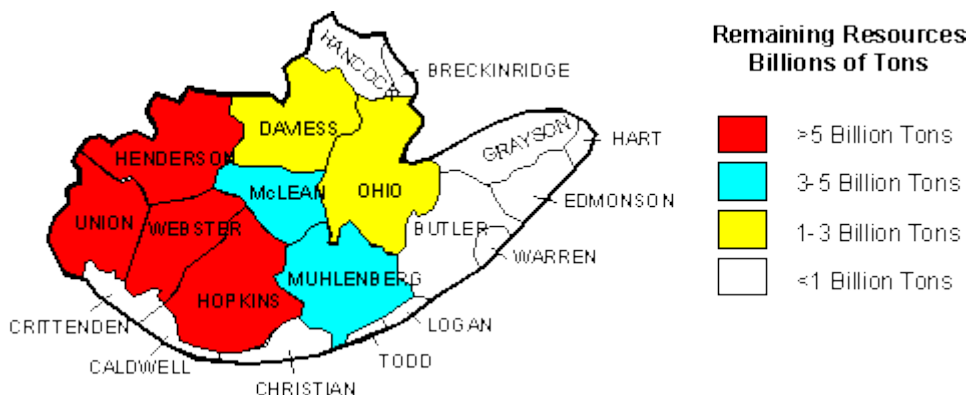
## Coal Reserves

### Exhibit 7-T1 – Acres Zoned to Coal Mining

According to the Energy Information Administration, while Kentucky remains in the top five states in terms of estimated recoverable reserves, the state's reserves are the smallest of the five. However, 61% of Kentucky's recoverable reserves come from western Kentucky.

Coal has been mined in Daviess County since before the Civil War. Shaft mining was the first procedure used for removing the coal, but more recently, strip excavation is the only method operating within the county.

According to Kentucky Coal Education, Kentucky Coal facts, the Western Kentucky coal field covers 6,400 square miles and contains over 35.67 billion tons of remaining resources. (Part of this cannot be mined economically using today's technology.) The remaining resources and their locations are illustrated below.



**Exhibit 7-M1: Coal Reserves in Western Kentucky**

There are 35 named coal beds, of which seven principal coal beds contain about 94% of the resources in Western Kentucky. Over 5.32 billion tons of coal have been mined or lost due to mining, amounting to only about 13% of total Western Kentucky coal resources.

According to David Williams, Geologist with the Kentucky Geological Survey in Henderson, there exists no mineable coal above the Number Nine (Mulford) Coal Bed within Daviess County. There exist two major coal beds that are of primary importance to the county. The Number Nine (Mulford) Coal Bed lies in the southwest portion of the county and in the Bon Harbor area. The Number Six Coal Bed (Davis) lies in the southwest portion of the county and in the hills southeast of Owensboro. In addition to these two major coal beds, several minor beds of lesser importance can be found within the county.

Of the 1.33 billion tons originally estimated coal reserves in Daviess County, .062 billion tons had been mined as of 2004, leaving 1.21 billion tons remaining.

## ENVIRONMENT

MiningFiscal Year	Total Acres Rezoned For Coal Mining
1976	33
1977	3,108
1978	1,703
1979	1,990
1980	416
1981	387
1982	2,099
1983	0
1984	1,357
1985	55
1986	310
1987	353
1988	1,294
1989	396
1990	1,956
1991	959
1992	34
1993	268
1994	1,212
1995	0
1996	106
1997	360
1998	105
1999	48
2000	0
2001	0
2002	142
2003	0
2004	0
2005	0
2006	91
2007	0
2008	61
2009	195
2010	160
2011	23
2012	808
2013	0
2014	0
2015	82
2016	0
2017	0
2018	0
2019	0
2020	0
2021	0
2022	0
2023	0
<b>1976-2023</b>	<b>20,111</b>

Source: OMPC Records

*Daviess County saw heavy coal mining activity in the late 1970's throughout the early 1990's. Since the mid 1990's coal mining zoning activity has slowed significantly with minimal coal mining zoning occurring from 2000 to 2005. With the exception of 2012, there has been very little coal mining activity since the last comprehensive plan update in 2011.*

## ENVIRONMENT

### Soils

As described in *Alpha* (1974), six main soil associations are found in Daviess County. Within each association, a few soil types of the more than 4,000 soil types predominate.

The characteristics of the four soil parameters are described below, taken from the *Storm Water Facilities Plan for the Owensboro Metro Area*:

**Exhibit 7-T2: Soils Classifications**

Soil Association	Soil Symbol	Hydrologic Parameter	Description
<b>1</b>	<b>Ek</b>	<b>B</b>	ELK, 0 to 2% slope, good drainage, 72-inch high water table, flooding not likely.
	<b>Ot</b>	<b>C</b>	OTWELL, 0-2% slopes, moderately well drained, depth to high water table - 20 inches. Flooding is possible when water table is high.
	<b>GN</b>	<b>D</b>	GINAT, level to nearly level, poor drainage, 0-6 inch high water table, flood is probable.
<b>2</b>	<b>Un</b>	<b>B</b>	UNIONTOWN, 0-2% slope, moderately well drained, 39 inch high water table, flooding not probable.
	<b>Pa</b>	<b>B/D</b>	PATTON, 0-2% slope, poor drainage, 0-16 inch high water table, subject to flooding.
	<b>He</b>	<b>C</b>	HENSHAW, 0-2% slope, poor drainage, 10-30 inch high water table, subject to flooding.
<b>3</b>	<b>Be</b>	<b>C</b>	BELKNAP, nearly level, poorly drained, 6-18 inch high water table, subject to flooding.
	<b>Ka</b>	<b>D</b>	KARNAK, nearly level, poorly drained, 0-6 inch high water table, subject to flooding.
	<b>We</b>	<b>B/C</b>	WAVERLY, 0-2% slope, poor drainage, 0-6 inch high water table, subject to flooding.
<b>4</b>	<b>Lo</b>	<b>C</b>	LORING, 0-25% slope, moderately well drained, 24-28 inch high water table, flooding not probable.
	<b>Mn</b>	<b>B</b>	MEMPHIS, 0-60% slope, well drained, 72 inch high water table, flooding not probable.
	<b>Be</b>	<b>C</b>	BELKNAP, nearly level, poorly drained, 6-18 inch high water table, subject to flooding.
<b>5</b>	<b>Lo</b>	<b>C</b>	LORING, 0-25% slope, moderately well drained, 24-28 inch high water table, flooding not probable.
	<b>WI</b>	<b>C</b>	WELLSTON, 6-30% slope, well drained, 72+ inch high water table, flooding is not probable.
<b>6</b>	<b>Fw</b>	<b>B</b>	FRONDORF, 12-50% slope, well drained, 72+ inch high water table, flooding is not probable.
	<b>WI</b>	<b>C</b>	WELLSTON, 6-30% slope, moderately well drained, 72+ inch high water table, flooding is not probable.
	<b>Za</b>	<b>C</b>	ZANESVILLE, 2-12% slope, moderately well to well drained, 24-72 inch high water table, flooding not probable.

Source: Alpha and Storm Water Facilities Plan for the Owensboro Metro Area

## ENVIRONMENT

**Parameter A** - Soils with low runoff, high infiltration and high transmission rates; mostly deep, well drained sands and gravels.

**Parameter B** - Soils with moderate infiltration and transmission rates when wet; moderately deep to deep, moderately well to well drained with moderately fine to moderately coarse textures.

**Parameter C** - Soils with slow infiltration rate when wet and slow transmission rate; these soils usually have a layer that impedes downward flow; moderately fine to fine textures.

**Parameter D** - High runoff potential soils, very slow infiltration rate when wet and very slow transmission rate; soils with a permanent high water table, usually a clay pan or clay layer near the surface, shallow soils over nearly impervious material; mostly clay soils with high swelling potential. For soils maps, refer to the full text of the *Comprehensive Plan* or the Kentucky Geological Survey.

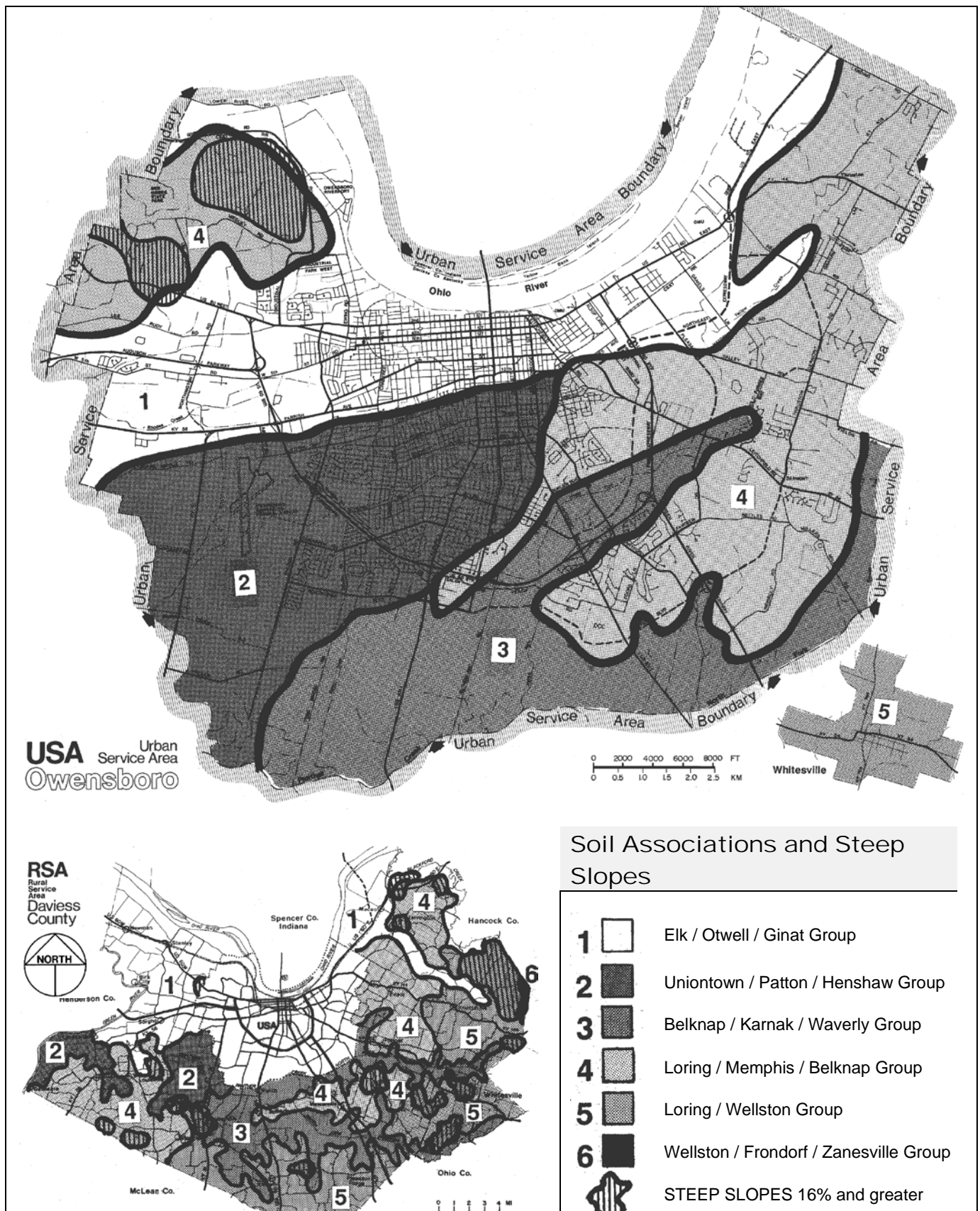
### Steep Slopes

Steep slopes, as defined by *Alpha*, are those areas that have a sixteen percent (16%) slope or more. This equals a grade slightly greater than nine (9) degrees. When the slope of a region is this great, certain development restrictions are necessary in order to prevent erosion of the soil, flooding of surface channels, loss of topsoil, and excessive cost to development.

Daviess County is fortunate to have only small amounts of land that fall within this fragile area category. Most land with steep slopes is in the far eastern and southeastern sections of Daviess County. Bon Harbor Hills, just northwest of Owensboro, is the notable exception.

# ENVIRONMENT

Exhibit 7 – M2: Soil Associations and Steep Slopes



## ENVIRONMENT

### Hydrology

As defined in *Alpha* (1974), the hydrology of Daviess County is a direct reflection of climate, geology, and physiographic units. The pattern of the perennial stream system in Daviess County is dendritic and can be defined by the following:

"This pattern is characteristic of plains and plateaus where the horizontal layers of rock do not exert any control over the location of stream valleys; that is, streams flowing in one area do not find it any easier or harder to cut downward than streams flowing elsewhere. Tributaries characteristically join the next larger channel, so that the acute angle of junction points upstream." Refer to *Alpha* for a detailed map showing the location of surface water in Daviess County.

The source of groundwater for domestic and other uses in the county is an alluvium formation of the quaternary system. As defined by *Alpha* (1974), an aquifer is a water-bearing stratum of permeable rock, sand, or gravel. The depth of this in Daviess County is approximately 150 feet. The water levels of the Ohio and Green rivers determine to a large extent the level that water in the aquifer will assume. This is the source of water transmitted to the community by Owensboro Municipal Utilities. A high iron content and high calcium and magnesium content are the chemical properties that significantly influence the quality of water yielded by the aquifer. Therefore, it is clear that a treatment process is pre-requisite to distribution and domestic use by the community.

### *Plant and Animal Life*

#### Plant Life

Daviess County is fortunate to have a wide variety of plant species. The following is a listing of different plant species supplied by Randy Hedges, Area Wildlife Biologist. (\* rare species, \*\* endangered species)

**Bottomland Areas** found along the Ohio River, Green River and Panther Creek include Red Maples, River Birch, Cherry Bark Oak\*, Pecan\*, Bald Cypress\*, Cattail, Poison Ivy, and Salt Marsh Cattail\*\*.

**Upland Areas** include Buck, White Ash, Catalpa\*, Dogwood, Redbud, Club Nose\*, Spider Lilly\*, Blackberry Lily\*, Kentucky Coffee Tree\*, Ginseng\*, Purple Fringe Orchid\*\*, and Nodding Trillium\*\*.

**Brushy Areas** include Persimmon, Black Locust, Sassafras, Turtle's Head\*, Nettle, Morning Glory, and Foxtail.

#### Animal Life

Although the Kentucky Department of Fish and Wildlife Resources in Frankfort has found no unusual wildlife populations in our planning area, Daviess County does provide an excellent habitat for populations of small game birds, mammals and fish. The area Wildlife Biologist reports this region contains common wildlife species native to the geographical and topographical regions of Western Kentucky.

**Mammals** include the opossum, raccoon, swamp rabbit, gray and fox squirrels, gray fox, and white-tailed deer; field mammals include badger, coyote, rabbits, groundhogs, and red foxes; and wetland mammals include mink, beaver, and muskrat.

**Birds include** quail, meadowlarks, sparrows, doves, hawks, owls, turkey, woodcock, thrushes, and robin; wetland birds include ducks, geese, and herons.



## ENVIRONMENT

**FISH** are contained in the rivers, streams, and lakes of Daviess County and include catfish, bass, suckers, crappie, white perch, bluegill, and sunfish.

According to Dr. Robert Kingsolver, Kentucky Wesleyan College Department of Biology, there are six distinct habitat types in the Daviess County area, including bottomland forest, second-growth forest, old-growth forest, riparian zones, prairie and wetlands.

### **Wetlands**

Wetlands are defined in the Army Corps of Engineer's (ACE) regulations [33 CFR, 328.3(b)] as "areas inundated or saturated by surface or ground water at a frequency and duration sufficient to support, and that under normal circumstances do support, a prevalence of vegetation typically adapted for life in saturated soil conditions."

Recognition of need for preserving wetland habitat is growing in the Owensboro area. The U. S. Department of Agriculture's Soil Conservation Service has mapped wetlands throughout Daviess County based upon soil type.

### ***Flood Plains***

Over 15 square miles of land are in flood-prone areas within the Urban Service Area (USA). Damaging floods have been reported many times throughout the history of Owensboro and Daviess County. However, the floods of 1937, 1964, and 1997 caused the most damage. Information on historical floods can be obtained from the record of the United States Geological Survey and the National Weather Service.

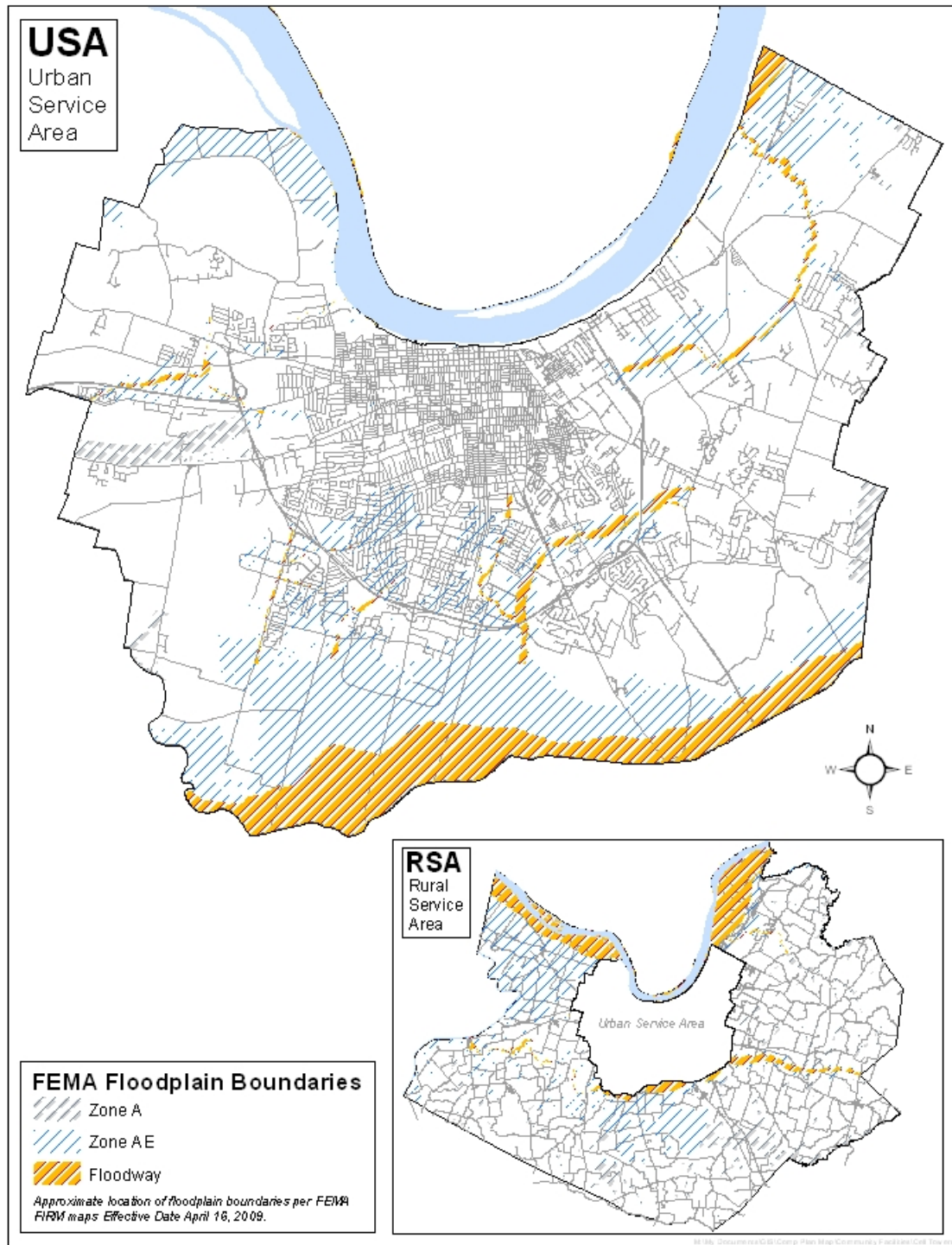
According to the ***Flood Insurance Study for Daviess County Kentucky and Incorporated Areas*** (readopted April 16, 2009) prepared by the Federal Emergency Management Agency, the 100-year flood has been adopted as the base flood for purposes of flood plain management measures. The area of the 100-year flood is divided into a floodway and a floodway fringe. The floodway is the channel of a stream, plus any adjacent flood plain areas, that must be kept free of encroachment in order that the 100-year flood may be carried without substantial increases in flood heights.

April 16, 2009, the Federal Emergency Management Agency (FEMA) issued an updated ***Flood Insurance Study for Daviess County Kentucky and Incorporated Areas***. This study included updated Flood Insurance Rate Maps for use in administering the National Flood Insurance Program. This study supersedes the *Flood Insurance Study* prepared in 1997.

The legislature of the State of Kentucky has in KRS 100 delegated the responsibility to local government units to adopt regulations designed to promote the public health, safety, and general welfare of its citizenry. Construction within the flood plain in Daviess County is regulated through the Owensboro Metropolitan Zoning Ordinance Article 18, adopted in 1996, revised and adopted in 2009, and through the issuance of building permits.

Through these accomplishments, the county is now eligible for disaster relief monies from the Federal Emergency Management Agency, and structures presently located within the flood plains may acquire flood insurance on the condition that the local community controls further development in the flood plain.

Exhibit 7-M3: Floodplain Boundaries



## ENVIRONMENT

### *Agricultural Land*

Daviess County is a very successful agricultural community with an excellent climatology, which supports a large variety of crops and livestock. In addition to its abundance of prime farmlands, most southern and midwest agricultural markets are accessible in one day's travel from Daviess County.

According to the U. S. Soil Conservation Service (SCS), prime agricultural land is land available and best suited for producing food, feed, forage, and oilseed crops. Prime farmland also has the soil quality, growing season, and moisture supply needed to produce sustained high yields of crops economically when treated and managed according to modern farming methods, including water management.

The number of farms in Daviess County declined between 1997 and 2002, however, the average size of farms increased. According to the *2002 Census of Agriculture County Profile for Daviess County*, there were 1,062 farms in 2002 down 9% from 1,161 in 1997. The *2007 Census of Agriculture, NOAA for Daviess County* showed a total of 1,008 farms in Daviess County continuing the decline of farm operations. Over sixty nine percent were shown as full owner with about twenty seven percent partially owned and only 3.7% tenant. The survey shows a total of 256,922 total acres used for farm operations in 2007, which is the latest data available at the time of this update. The total value of animal sales, including products exceeds \$29 million and the total value of crop sales exceeds \$88 million.

Past trends show a decline in the population involved in farming. In 1987, there were 582 operators whose principal occupation was farming. By 1992, there were 570 operators; and in 1997, only 484 operators. In 2002 there were 603 operators, a slight increase from 1997. The trend in Daviess County seems to be reversing during these last two reporting periods. Data contained in the *2007 Census of Agriculture County Profile for Daviess County* indicates there were 1,381 operators.

### *Historic and Archeological Sites*

Kentucky, as well as Daviess County, has a wealth of historic sites which reveal a rich and varied collection of material cultural resources reflecting a heritage somewhat unique in the United States.

Since its creation in 1966, the Kentucky Heritage Council has been charged with the task of preserving historic and archaeological resources. The Council has conducted an ongoing survey of historic and archaeological sites. The survey provides a database for use in evaluating historic properties and in developing comprehensive preservation plans.

The Kentucky Heritage Council administers various programs including tax credits for rehabilitation, Kentucky Main Street programs, preservation programs and provides education and technical services.

Archaeological sites need to be considered in land use planning because they are non-renewable resource. It is sad indeed that none of the sites in our county are left undisturbed. None are known to be unique or sites of specialty. The most current catalog of historical and archeological sites are listed in Exhibit 7-T3.

# ENVIRONMENT

## Exhibit 7-T3 – Historic Sites in Daviess County

ADDRESS	STREET	SITE #	HISTORIC NAME	STATUS DESCRIPTION
	(UNKNOWN)	DAOB 399	HOUSE	UNDETERMINED
	(UNKNOWN)	DA 166	BRYANT'S CHAPEL	UNDETERMINED
	(UNKNOWN)	DA 198	BARN	UNDETERMINED
6143	1ST ST	DA 21	ST ELIZABETH CATHOLIC CHURCH	UNDETERMINED
210	ALLEN ST	DAOB 176	COMMERCIAL BUILDING	N/R DISTRICT CONTRI. SITE
<b>212 -216</b>	<b>ALLEN ST</b>	<b>DAOB 94</b>	<b>INQUIRER BLDG (DEMO 1987)</b>	<b>DEMOLISHED</b>
217	ALLEN ST	DAOB 95	MISCHEL BLDG	N/R DISTRICT CONTRI. SITE
<b>221</b>	<b>ALLEN ST</b>	<b>DAOB 175</b>	<b>COMMERCIAL BUILDING</b>	<b>DEMO FR N/R DIST CONTRI.</b>
222	ALLEN ST	DAOB 177	COMMERCIAL BUILDING	N/R DISTRICT NON-CONTRIB.
524	ALLEN ST	DAOB 53	GRENTHER HOUSE	UNDETERMINED
527	ALLEN ST	DAOB 52	THIRD BAPTIST CHURCH	UNDETERMINED
625	ALLEN ST	DAOB 51	ZION UNITED CHURCH OF CHRIST	UNDETERMINED
1129	ALLEN ST		HOUSE (JZ MOORE LOCAL HIST DIST)	JZ MOORE LOCAL HIST DIST
1201	ALLEN ST	DAOB 149	SETTLE MEMORIAL UMC PARSONAGE (JZ MOORE NR+LOC DIST)	N/R DISTRICT CONTRI. SITE
1202	ALLEN ST		HOUSE (JZ MOORE)	N/R DISTRICT CONTRI. SITE
1204	ALLEN ST		HOUSE (JZ MOORE)	N/R DISTRICT CONTRI. SITE
1205	ALLEN ST		HOUSE (JZ MOORE)	N/R DISTRICT CONTRI. SITE
1206	ALLEN ST		HOUSE (JZ MOORE)	N/R DISTRICT CONTRI. SITE
1210	ALLEN ST		HOUSE (JZ MOORE)	N/R DISTRICT CONTRI. SITE
1214	ALLEN ST		HOUSE (JZ MOORE)	N/R DISTRICT CONTRI. SITE
1215	ALLEN ST		HOUSE (JZ MOORE)	N/R DISTRICT CONTRI. SITE
1217	ALLEN ST		HOUSE (JZ MOORE)	N/R DISTRICT CONTRI. SITE
1218	ALLEN ST		HOUSE (JZ MOORE)	N/R DISTRICT CONTRI. SITE
1219	ALLEN ST		HOUSE (JZ MOORE)	N/R DISTRICT CONTRI. SITE
1224	ALLEN ST		HOUSE (JZ MOORE)	N/R DISTRICT CONTRI. SITE
1229	ALLEN ST	DAOB 46	HOUSE (JZ MOORE)	N/R DISTRICT CONTRI. SITE
1230	ALLEN ST		HOUSE (CONTEMP) (JZ MOORE)	N/R DISTRICT NON-CONTRIB.
1231	ALLEN ST		HOUSE (JZ MOORE)	N/R DISTRICT CONTRI. SITE
1301	ALLEN ST		HOUSE (JZ MOORE)	N/R DISTRICT CONTRI. SITE
1302	ALLEN ST		HOUSE (JZ MOORE)	N/R DISTRICT CONTRI. SITE
1305	ALLEN ST		VACANT LOT (JZ MOORE)	N/R DISTRICT NON-CONTRIB.
1309	ALLEN ST		HOUSE (JZ MOORE)	N/R DISTRICT CONTRI. SITE
1310	ALLEN ST		HOUSE (JZ MOORE)	N/R DISTRICT CONTRI. SITE
1311	ALLEN ST		HOUSE (JZ MOORE)	N/R DISTRICT CONTRI. SITE
1312	ALLEN ST		HOUSE (JZ MOORE)	N/R DISTRICT CONTRI. SITE
1316	ALLEN ST		HOUSE (JZ MOORE)	N/R DISTRICT CONTRI. SITE
1322	ALLEN ST		HOUSE (JZ MOORE)	N/R DISTRICT CONTRI. SITE
1323	ALLEN ST		HOUSE (JZ MOORE)	N/R DISTRICT CONTRI. SITE
1328	ALLEN ST		HOUSE (JZ MOORE)	N/R DISTRICT CONTRI. SITE
1329	ALLEN ST		HOUSE	JZ MOORE LOCAL HIST DIST
1330	ALLEN ST		VACANT LOT	JZ MOORE LOCAL HIST DIST
1331	ALLEN ST		HOUSE	JZ MOORE LOCAL HIST DIST
512	ALPHA ST	DAOB 397	HOUSE	UNDETERMINED
8949	AUBREY RD	DA 149	MACEO SCHOOL	UNDETERMINED

## ENVIRONMENT

8957		AUBREY RD	DA 148	FIRST BAPTIST CHURCH	UNDETERMINED
6615		AULL RD	DA 112	LOG SHED	UNDETERMINED
		BARNETT RD	DA 413	HOUSE	UNDETERMINED
12331		BENNETT RD	DA 72	BENNETT HOUSE	UNDETERMINED
3000		BITTEL RD	DAOB 2	REV CHARLES OATES HOUSE	UNDETERMINED
429		BOLIVAR ST	DAOB 67	HOUSE	UNDETERMINED
6266		BOSTON-LAFFOON RD	DA 98	EVANS HOUSE	UNDETERMINED
6650		BOSTON-LAFFOON RD	DA 99	BELLANY FARM	UNDETERMINED
		BOTELER RD	DA 113	SUBLETT HOUSE	UNDETERMINED
		BRASHER RD	DA 120	BROWN HOUSE	UNDETERMINED
		BROWNS VALLEY-RED HILL RD	DA 195	FARM	UNDETERMINED
175		BROWNS VALLEY-RED HILL RD	DA 196	FARM	UNDETERMINED
1267		BROWNS VALLEY-RED HILL RD	DA 76	FIELDS HOUSE	UNDETERMINED
5214		CARTER RD	DA 60	FITTS-DRAPER HOUSE	UNDETERMINED
2001	BLK	CEMETERY ST	DAOB 349	ELMWOOD CEMETERY (POTTER'S FIELD)	UNDETERMINED
		CENTER ST	DAOB 284	HOUSE	UNDETERMINED
		CENTER ST	DAOB 285	HOUSE	UNDETERMINED
		CENTER ST	DAOB 286	HOUSE	UNDETERMINED
		CENTER ST	DAOB 287	HOUSE	UNDETERMINED
		CENTER ST	DAOB 288	HOUSE	UNDETERMINED
731		CENTER ST	DAOB 254	HOUSE	UNDETERMINED
733		CENTER ST	DAOB 253	CHURCH	UNDETERMINED
1600	BLK	CENTER ST	DAOB 340	HOUSE	UNDETERMINED
1600	BLK	CENTER ST	DAOB 341	HOUSE	UNDETERMINED
1600	BLK	CENTER ST	DAOB 342	HOUSE	UNDETERMINED
1600	BLK	CENTER ST	DAOB 343	HOUSE	UNDETERMINED
1600	BLK	CENTER ST	DAOB 344	HOUSE	UNDETERMINED
1600	BLK	CENTER ST	DAOB 345	HOUSE	UNDETERMINED
		CHURCH ST	DA 374	INDUSTRIAL BUILDING	UNDETERMINED
		CHURCH ST	DA 375	HOUSE	UNDETERMINED
		CHURCH ST	DA 376	HOUSE	UNDETERMINED
		CHURCH ST	DA 377	HOUSE	UNDETERMINED
		CHURCH ST	DA 378	HOUSE	UNDETERMINED
		CHURCH ST	DA 379	HOUSE	UNDETERMINED
		CHURCH ST	DA 391	HOUSE	UNDETERMINED
		CHURCH ST	DA 392	HOUSE	UNDETERMINED
		CHURCH ST	DA 393	HOUSE	UNDETERMINED
		CHURCH ST	DA 394	HOUSE	UNDETERMINED
		CHURCH ST	DA 403	HOUSE	UNDETERMINED
		CHURCH ST	DA 404	HOUSE	UNDETERMINED
		CHURCH ST	DA 405	HOUSE	UNDETERMINED
		CHURCH ST	DA 406	HOUSE	UNDETERMINED
		CHURCH ST	DA 407	HOUSE	UNDETERMINED
81		CHURCH ST	DA 5	ST PETERS CHURCH	UNDETERMINED
234		CHURCH ST	DA 4	STANLEY METHODIST CHURCH	UNDETERMINED

# ENVIRONMENT

351	CHURCH ST	DA 3	STANLEY BAPTIST CHURCH	UNDETERMINED
7973	CLARK RD	DA 44	EDWARD CLARK HOUSE	UNDETERMINED
<b>630</b>	<b>CLAY ST</b>	<b>DAOB 49</b>	<b>YEWELL HOUSE</b>	<b>NATIONAL REGISTER</b>
535	CRABTREE AVE	DAOB 383	HOUSE	UNDETERMINED
603	CRABTREE AVE	DAOB 385	HOUSE	UNDETERMINED
616	CRABTREE AVE	DAOB 384	HOUSE	UNDETERMINED
3840	CRANE POND RD	DA 191	HOUSE	UNDETERMINED
3950	CRANE POND RD	DA 190	HOUSE	UNDETERMINED
4140	CRANE POND RD	DA 80	JAMES A JOHNSON HOUSE	UNDETERMINED
1724	CRUSE DR		RELOCATED/ALTERED HOUSE	N/R DISTRICT NON-CONTRIB.
7950	CUMMINGS RD	DA 32	ST ALPHONSO PARISH HOUSE	UNDETERMINED
8001	CUMMINGS RD	DA 31	MT ST JOSEPH ACADEMY (6 BLDGS)	N/R DISTRICT CONTRI. SITE
8451	CUMMINGS RD	DA 34	J A THOMPSON HOUSE	UNDETERMINED
5940	CURDSVILLE-DELAWARE RD	DA 29	PANTHER TRUSS BRIDGE	UNDETERMINED
6243	CURDSVILLE-DELAWARE RD	DA 23	CURDSVILLE METHODIST CHURCH	UNDETERMINED
8000	CURDSVILLE-DELAWARE RD	DA 25	SMOOK CREEK TRUSS BRIDGE	UNDETERMINED
1635	DANIELS LN	DA 130	ASHBY/FUQUA HOUSE	UNDETERMINED
2116	DANIELS LN	DA 319	HOUSE	UNDETERMINED
101	DAVIESS ST	DAOB 153	RIVERPARK CTR INTERNATIONAL BLUEGRASS MUSIC MUSEUM	N/R DISTRICT NON-CONTRIB.
<b>417</b>	<b>DAVIESS ST</b>	<b>DAOB 70</b>	<b>HELP OFFICE</b>	<b>DEMOLISHED</b>
<b>429</b>	<b>DAVIESS ST</b>	<b>DAOB 61</b>	<b>TEMPLE ADATH ISRAEL</b>	<b>NATIONAL REGISTER</b>
1200	BLK DAVIESS ST	DAOB 322	HOUSE	UNDETERMINED
1200	BLK DAVIESS ST	DAOB 323	HOUSE	UNDETERMINED
1200	BLK DAVIESS ST	DAOB 324	HOUSE	UNDETERMINED
1202	DAVIESS ST		HOUSE (JZ MOORE)	N/R DISTRICT CONTRI. SITE
1203	DAVIESS ST		HOUSE	JZ MOORE LOCAL HIST DIST
1204	DAVIESS ST		HOUSE (JZ MOORE)	N/R DISTRICT CONTRI. SITE
1205	DAVIESS ST		HOUSE	JZ MOORE LOCAL HIST DIST
1208	DAVIESS ST		HOUSE (JZ MOORE)	N/R DISTRICT CONTRI. SITE
1209	DAVIESS ST		HOUSE	JZ MOORE LOCAL HIST DIST
1212	DAVIESS ST		HOUSE	JZ MOORE LOCAL HIST DIST
1213	DAVIESS ST		HOUSE	JZ MOORE LOCAL HIST DIST
1216	DAVIESS ST		HOUSE	JZ MOORE LOCAL HIST DIST
1218	DAVIESS ST		HOUSE	JZ MOORE LOCAL HIST DIST
1223	DAVIESS ST		HOUSE	JZ MOORE LOCAL HIST DIST
1225	DAVIESS ST		HOUSE	JZ MOORE LOCAL HIST DIST
1229	DAVIESS ST		HOUSE	JZ MOORE LOCAL HIST DIST
1230	DAVIESS ST		HOUSE	JZ MOORE LOCAL HIST DIST
1302	DAVIESS ST		HOUSE	JZ MOORE LOCAL HIST DIST
1304	DAVIESS ST		HOUSE	JZ MOORE LOCAL HIST DIST
1306	DAVIESS ST		HOUSE	JZ MOORE LOCAL HIST DIST
1312	DAVIESS ST		HOUSE	JZ MOORE LOCAL HIST DIST
1318	DAVIESS ST		HOUSE	JZ MOORE LOCAL HIST DIST
1322	DAVIESS ST	DAOB 324?	HOUSE	JZ MOORE LOCAL HIST DIST
1328	DAVIESS ST	DAOB 323?	HOUSE	JZ MOORE LOCAL HIST DIST

## ENVIRONMENT

1330		DAVIESS ST	DAOB 322?	HOUSE	JZ MOORE LOCAL HIST DIST
1501	BLK	DAVIESS ST	DAOB 325	HOUSE	UNDETERMINED
1501	BLK	DAVIESS ST	DAOB 326	HOUSE	UNDETERMINED
1501	BLK	DAVIESS ST	DAOB 327	HOUSE	UNDETERMINED
1501	BLK	DAVIESS ST	DAOB 328	HOUSE	UNDETERMINED
1501	BLK	DAVIESS ST	DAOB 329	HOUSE	UNDETERMINED
1501	BLK	DAVIESS ST	DAOB 330	HOUSE	UNDETERMINED
1501	BLK	DAVIESS ST	DAOB 331	HOUSE	UNDETERMINED
1600	BLK	DAVIESS ST	DAOB 332	HOUSE	UNDETERMINED
1600	BLK	DAVIESS ST	DAOB 333	HOUSE	UNDETERMINED
1600	BLK	DAVIESS ST	DAOB 334	HOUSE	UNDETERMINED
1600	BLK	DAVIESS ST	DAOB 335	HOUSE	UNDETERMINED
10		DISTILLERY RD	DAOB 126	MEDLEY DISTILLING CO (WAS UNITED DISTILLERY)	MEETS N/R CRITERIA
7		DUBLIN LN	DA 233	CLIFFORD F CRILEY US ARMY RESERVE COMMAND	UNDETERMINED
		E 10TH ST	DAOB 246	INDUSTRIAL BUILDING	UNDETERMINED
115		E 12TH ST		HOUSE	JZ MOORE LOCAL HIST DIST
119		E 12TH ST		HOUSE	JZ MOORE LOCAL HIST DIST
109		E 14TH ST		HOUSE	JZ MOORE LOCAL HIST DIST
115		E 14TH ST		HOUSE	JZ MOORE LOCAL HIST DIST
201	BLK	E 14TH ST	DAOB 321	SITE OF FIRST FIRE ENGINE HOUSE	UNDETERMINED
700	BLK	E 15TH ST	DAOB 315	HOUSE	UNDETERMINED
1701	BLK	E 17TH ST	DAOB 306	INDUSTRIAL BUILDING	UNDETERMINED
1515		E 18TH ST	DAOB 12	V E ANDERSON MFG CO	UNDETERMINED
100		E 2ND ST	DAOB 172	DAVIESS COUNTY JUDICIAL CENTER	N/R DISTRICT NON-CONTRIB.
101	-103	E 2ND ST	DAOB 96	NEWBERRY/WILE BLDG AND OTHER BLDGS	N/R DISTRICT CONTRI. SITE
105	-107	E 2ND ST	DAOB 97	WILES BROS CLOTHIERS SOLOMON WILE & SONS BLDG	N/R DISTRICT CONTRI. SITE
107		E 2ND ST	DAOB 159	SOLOMON WILE BUILDING	N/R DISTRICT CONTRI. SITE
109		E 2ND ST	DAOB 158	COMMERCIAL BUILDING	N/R DISTRICT CONTRI. SITE
111		E 2ND ST	DAOB 157	COMMERCIAL BUILDING	N/R DISTRICT NON-CONTRIB.
113		E 2ND ST	DAOB 156	GEORGE W SCHMUCK BUILDING	N/R DISTRICT CONTRI. SITE
115	-119	E 2ND ST	DAOB 155	SALM'S BUILDING	N/R DISTRICT CONTRI. SITE
121		E 2ND ST	DAOB 154	MCATEE LYDDANE & RAY DEPARTMENT STORE	N/R DISTRICT CONTRI. SITE
122		E 2ND ST	DAOB 173	S W ANDERSON BUILDING	N/R DISTRICT CONTRI. SITE
207	, 209, 211	E 2ND ST	DAOB 98	MILLER BLDG	N/R DISTRICT CONTRI. SITE
213		E 2ND ST	DAOB 152	COMMERCIAL BUILDING	N/R DISTRICT CONTRI. SITE
215		E 2ND ST	DAOB 151	COMMERCIAL BUILDING	N/R DISTRICT CONTRI. SITE
217	-225	E 2ND ST	DAOB 209	OPEN SPACE	N/R DISTRICT CONTRI. SITE
222		E 2ND ST	DAOB 99	GUNTHER BLDG (DEMO 1988)	DEMOLISHED
303		E 2ND ST	DAOB 206	VACANT LOT/OPEN SPACE	N/R DISTRICT CONTRI. SITE
305		E 2ND ST	DAOB 205	PARKING LOT	UNDETERMINED
312		E 2ND ST	DAOB 207	COMMERCIAL BUILDING (SEARS ROEBUCK & CO)	N/R DISTRICT CONTRI. SITE
319		E 2ND ST	DAOB 101	PROGRESS PRINTING/J W BARR & CO	N/R DISTRICT CONTRI. SITE
321	-325	E 2ND ST	DAOB 204	WRIGHT MACHINE CO OFFICE AND SALES ROOM	N/R DISTRICT CONTRI. SITE

# ENVIRONMENT

400		E 2ND ST	DAOB 208	COMMERCIAL BUILDING OWENSBORO COCA COLA BOTTLING	N/R DISTRICT CONTRI. SITE
401	-405	E 2ND ST	DAOB 203	WRIGHT MACHINE CO FOUNDRY & MACHINE SHOP BUILDING	N/R DISTRICT CONTRI. SITE
409	-411	E 2ND ST	DAOB 201	COMMERCIAL BUILDING (PROGRESS PRINTING)	N/R DISTRICT CONTRI. SITE
<b>412</b>	<b>-414</b>	<b>E 2ND ST</b>	<b>DAOB 102</b>	<b>GEORGE MISCHER &amp; SONS</b>	<b>NATIONAL REGISTER</b>
		E 3RD ST	DAOB 261	HOUSE	UNDETERMINED
		E 3RD ST	DAOB 262	HOUSE	UNDETERMINED
		E 3RD ST	DAOB 289	HOUSE	UNDETERMINED
		E 3RD ST	DAOB 290	HOUSE	UNDETERMINED
111		E 3RD ST	DAOB 83	OWENSBORO PLUMBING & HEATING CO.	N/R DISTRICT CONTRI. SITE
115	-117	E 3RD ST	DAOB 174	SMITH AND BUTTERFIELD BUILDING	N/R DISTRICT CONTRI. SITE
301		E 3RD ST	DAOB 100	OWENSBORO BRIDGE	UNDETERMINED
923		E 3RD ST	DAOB 79	HOUSE	UNDETERMINED
		E 4TH ST	DAOB 264	COMMERCIAL BUILDING	UNDETERMINED
		E 4TH ST	DAOB 265	COMMERCIAL BUILDING	UNDETERMINED
		E 4TH ST	DAOB 281	COMMERCIAL BUILDING	UNDETERMINED
		E 4TH ST	DAOB 282	COMMERCIAL BUILDING	UNDETERMINED
		E 4TH ST	DAOB 283	COMMERCIAL BUILDING	UNDETERMINED
		E 4TH ST	DAOB 291	HOUSE/COMMERCIAL BUILDING	UNDETERMINED
		E 4TH ST	DAOB 292	COMMERCIAL BUILDING	UNDETERMINED
		E 4TH ST	DAOB 293	COMMERCIAL BUILDING	UNDETERMINED
		E 4TH ST	DAOB 294	COMMERCIAL BUILDING	UNDETERMINED
		E 4TH ST	DAOB 295	COMMERCIAL BUILDING	UNDETERMINED
		E 4TH ST	DAOB 296	COMMERCIAL BUILDING	UNDETERMINED
		E 4TH ST	DAOB 297	COMMERCIAL BUILDING	UNDETERMINED
		E 4TH ST	DAOB 298	GRAIN SILO BUILDING	UNDETERMINED
101		E 4TH ST	DAOB 74	CITY HALL	UNDETERMINED
104		E 4TH ST	DAOB 73	HARDWICK	UNDETERMINED
<b>112</b>		<b>E 4TH ST</b>	<b>DAOB 72</b>	<b>CAMDEN RILEY HOUSE</b>	<b>NATIONAL REGISTER</b>
<b>120</b>		<b>E 4TH ST</b>	<b>DAOB 71</b>	<b>SWEENEY HOUSE</b>	<b>DEMOLISHED FR N/R</b>
201		E 4TH ST	DAOB 69	SETTLE MEMORIAL UNITED METHODIST CHURCH	MEETS N/R CRITERIA
<b>303</b>		<b>E 4TH ST</b>	<b>DAOB 68</b>	<b>D D BOGARD HOUSE</b>	<b>NATIONAL REGISTER</b>
<b>504</b>		<b>E 4TH ST</b>	<b>DAOB 64</b>	<b>ST. JOSEPH'S CHURCH</b>	<b>DEMOLISHED FR N/R</b>
601		E 4TH ST	DAOB 66	ST PAULS CHURCH	MEETS N/R CRITERIA
609		E 4TH ST	DAOB 65	ST PAULS RECTORY	UNDETERMINED
817		E 4TH ST	DAOB 80	HOUSE	UNDETERMINED
<b>902</b>		<b>E 4TH ST</b>	<b>DAOB 81</b>	<b>EARLY GAS STATION</b>	<b>DEMOLISHED</b>
<b>121</b>		<b>E 5TH ST</b>	<b>DAOB 60</b>	<b>JAMES J SWEENEY HOUSE</b>	<b>NATIONAL REGISTER</b>
221		E 5TH ST	DAOB 62	FLAHERTY HOUSE	UNDETERMINED
301		E 5TH ST	DAOB 63	ELMER MILLER HOUSE	UNDETERMINED
		E 6TH ST	DAOB 270	HOUSE	UNDETERMINED
		E 6TH ST	DAOB 271	WAREHOUSE	UNDETERMINED
		E 7TH ST	DAOB 210	HOUSE	UNDETERMINED
		E 7TH ST	DAOB 211	HOUSE	UNDETERMINED
		E 7TH ST	DAOB 212	HOUSE	UNDETERMINED
		E 7TH ST	DAOB 257	HOUSE/APARTMENTS	UNDETERMINED



ENVIRONMENT

		E 7TH ST	DAOB 272	HOUSE	UNDETERMINED
		E 7TH ST	DAOB 273	COMMERCIAL BUILDING	UNDETERMINED
200		E 7TH ST	DAOB 50	FIRST CHRISTIAN CHURCH	MEETS N/R CRITERIA
		E 8TH ST	DAOB 255	MANUFACTURING BUILDING	UNDETERMINED
		E 9TH ST	DAOB 247	HOUSE	UNDETERMINED
		E 9TH ST	DAOB 248	COMMERICAL GARAGE	UNDETERMINED
1135		E 9TH ST	DAOB 47	WHOLESALE GROCERS	UNDETERMINED
1780		E MARKSBERRY RD	DA 75	HERBNER ROUND BARN	UNDETERMINED
115		E PARRISH AVE		HOUSE	JZ MOORE LOCAL HIST DIST
116		E PARRISH AVE		HOUSE	JZ MOORE LOCAL HIST DIST
601	BLK	E PARRISH AVE	DAOB 319	HOUSE	UNDETERMINED
<b>2412</b>		<b>E PARRISH AVE</b>	<b>DAOB 7</b>	<b>LYNCH GRAY HOUSE</b>	<b>DEMO MET N/R CRITERIA</b>
2530		EBACH ST	DAOB 353	HOUSE	UNDETERMINED
5005		ED FOSTER RD	DA 89	BOLTEER-COOK	UNDETERMINED
207		EDWARDS ST	DAOB 358	HOUSE	UNDETERMINED
238		EDWARDS ST	DAOB 359	HOUSE	UNDETERMINED
900		ELSMERE ST	DAOB 245	HOUSE	UNDETERMINED
910		ELSMERE ST	DAOB 244	HOUSE	UNDETERMINED
912		ELSMERE ST	DAOB 243	HOUSE	UNDETERMINED
914		ELSMERE ST	DAOB 242	HOUSE	UNDETERMINED
916		ELSMERE ST	DAOB 241	HOUSE	UNDETERMINED
920		ELSMERE ST	DAOB 240	HOUSE	UNDETERMINED
924		ELSMERE ST	DAOB 239	HOUSE	UNDETERMINED
930		ELSMERE ST	DAOB 238	HOUSE	UNDETERMINED
2393		FAIRVIEW DR	DA 109	JEREMIAH YEWELL	UNDETERMINED
2731		FAIRVIEW DR	DA 156	JOHN MCFARLAND HOUSE	MEETS N/R CRITERIA
7680		FITTS RD	DA 61	HOUSE	UNDETERMINED
8130		FITTS RD	DA 62	SCHOOL BUILDING	UNDETERMINED
1730		FOORS LN	DA 108	FOORS HOUSE	UNDETERMINED
300		FREDERICA ST	DAOB 105	FIRST SECURITY BANK	MEETS N/R CRITERIA
301		FREDERICA ST	DAOB 190	PARKING LOT	UNDETERMINED
304		FREDERICA ST	DAOB 104	FIRST SECURITY BANK	UNDETERMINED
305		FREDERICA ST	DAOB 191	COMMERCIAL BUILDING	N/R DISTRICT CONTRI. SITE
307	-309	FREDERICA ST	DAOB 192	PARKING LOT	UNDETERMINED
313		FREDERICA ST	DAOB 193	OFFICE BUILDING	N/R DISTRICT NON-CONTRIB.
319		FREDERICA ST	DAOB 194	PARKING LOT	UNDETERMINED
327	-329	FREDERICA ST	DAOB 195	PARKING LOT	UNDETERMINED
333		FREDERICA ST	DAOB 196	RAINES SHOE HOSPITAL	N/R DISTRICT CONTRI. SITE
335		FREDERICA ST	DAOB 78	RAINES BLDG (ALSO DIC 124)	N/R DISTRICT CONTRI. SITE
<b>420</b>		<b>FREDERICA ST</b>	<b>DAOB 103</b>	<b>CALLAS SWEET SHOP</b>	<b>NATIONAL REGISTER</b>
<b>423</b>		<b>FREDERICA ST</b>	<b>DAOB 58</b>	<b>FEDERAL BLDG/ US POST OFFICE GILLIM HOUSE (CAMPBELL CLUB) [PVA 521 FREDERICA]</b>	<b>NATIONAL REGISTER</b>
<b>517</b>		<b>FREDERICA ST</b>	<b>DAOB 57</b>		<b>NATIONAL REGISTER</b>
741		FREDERICA ST	DAOB 56	HOUSE	DEMOLISHED
751		FREDERICA ST	DAOB 55	HOUSE	DEMOLISHED
<b>901</b>		<b>FREDERICA ST</b>	<b>DAOB 40</b>	<b>MAJOR JOHN HAMPDEN SMITH HOUSE</b>	<b>NATIONAL REGISTER</b>
<b>901</b>		<b>FREDERICA ST</b>	<b>DAOB 41</b>	<b>CARNEGIE FREE PUBLIC LIBRARY</b>	<b>NATIONAL REGISTER</b>

# ENVIRONMENT

1035	FREDERICA ST	DAOB 39	UNION STATION (L & N DEPOT)	NATIONAL REGISTER
1220	FREDERICA ST	DAOB 38	MEDLEY HOUSE	NATIONAL REGISTER
1524	FREDERICA ST		HOUSE (COM'L USE) (PHILLIPS CT NR DIST)	N/R DISTRICT CONTRI. SITE
1531	FREDERICA ST	DAOB 37	WATHEN HOUSE (PHILLIPS CT NR DIST)	N/R DISTRICT CONTRI. SITE
1535	FREDERICA ST		BISHOP OF O'BORO HSE (COM'L USE) (PHILLIPS CT NR DIST)	N/R DISTRICT CONTRI. SITE
1540	FREDERICA ST	DAOB 36	TRIPLETT HOUSE (PHILLIPS CT NR DIST)	N/R DISTRICT CONTRI. SITE
1542	FREDERICA ST	DAOB 35	MASSIE HOUSE (PHILLIPS CT NR DIST)	N/R DISTRICT CONTRI. SITE
1548	FREDERICA ST	DAOB 34	W E WHITLEY (PHILLIPS CT NR DIST)	N/R DISTRICT CONTRI. SITE
1600	FREDERICA ST		OFFICE BLDG (WAS VAC LOT N/R DIST INTRUS)	N/R DISTRICT NON-CONTRIB.
1601	FREDERICA ST		HOUSE (PHILLIPS CT NR DIST)	DEMO FR N/R DIST CONTRI.
1605	FREDERICA ST	DAOB 33	BALTORAF HOUSE (PHILLIPS CT NR DIST)	DEMO FR N/R DIST CONTRI.
1609	FREDERICA ST		HOUSE (PHILLIPS CT NR DIST)	DEMO FR N/R DIST CONTRI.
1611	FREDERICA ST		HOUSE (PHILLIPS CT NR DIST)	DEMO FR N/R DIST CONTRI.
1615	FREDERICA ST		HOUSE (PHILLIPS CT NR DIST)	DEMO FR N/R DIST CONTRI.
1616	FREDERICA ST		HOUSE (COM'L USE) (PHILLIPS CT NR DIST)	N/R DISTRICT CONTRI. SITE
1617	FREDERICA ST	DAOB 32	PANAGOS HOUSE (PHILLIPS CT NR DIST)	N/R DISTRICT CONTRI. SITE
1619	FREDERICA ST	DAOB 132	NELSON-ORRAHOOD HOUSE (PHILLIPS CT NR DIST)	N/R DISTRICT CONTRI. SITE
1620	FREDERICA ST		HOUSE (COM'L USE) (PHILLIPS CT NR DIST)	N/R DISTRICT CONTRI. SITE
1705	FREDERICA ST		HOUSE (DEMOL) (PHILLIPS CT NR DIST)	DEMO FR N/R DIST CONTRI.
1715	FREDERICA ST	DAOB 30	BURNS HOUSE (DEMOL) (PHILLIPS CT NR DIST)	DEMO FR ND,NN
1715	FREDERICA ST	DAOB 31	HOUSE (DEMOL) (PHILLIPS CT NR DIST)	DEMO FR ND,NN
1716	FREDERICA ST	DAOB 29	LONGFELLOW ELEM SCHOOL	DEMOLISHED
1729	FREDERICA ST		HOUSE (PHILLIPS CT NR DIST)	DEMO FR N/R DIST CONTRI.
1800	FREDERICA ST	DAOB 28	OWENSBORO HIGH SCHOOL	UNDETERMINED
2725	FREDERICA ST	DAOB 19	MORGAN HOUSE	UNDETERMINED
3000	FREDERICA ST	DAOB 18	KENTUCKY WESLYAN COLLEGE	UNDETERMINED
3800	FREDERICA ST	DAOB 16	TEXAS GAS CORP	UNDETERMINED
5620	FREDERICA ST	DA 69	HOUSE	UNDETERMINED
	FRENCH ISLAND RD	DA 390	HOUSE	UNDETERMINED
	FRENCH ISLAND RD	DA 395	HOUSE	UNDETERMINED
	FRENCH ISLAND RD	DA 396	HOUSE	UNDETERMINED
	FRENCH ISLAND RD	DA 397	HOUSE	UNDETERMINED
	FRENCH ISLAND RD	DA 398	HOUSE	UNDETERMINED
	FRENCH ISLAND RD	DA 401	HOUSE	UNDETERMINED
	FRENCH ISLAND RD	DA 402	HOUSE	UNDETERMINED
	FRENCH ISLAND RD	DA 408	HOUSE	UNDETERMINED
	FRENCH ISLAND RD	DA 409	HOUSE	UNDETERMINED
	FRENCH ISLAND RD	DA 412	HOUSE	UNDETERMINED
	GRAHAM LN	DA 229	HOUSE	UNDETERMINED
	GRAHAM LN	DA 230	HOUSE	UNDETERMINED
	GRAHAM LN	DA 231	HOUSE	UNDETERMINED
1700	GRAVES LN	DA 143	GENERAL STORE	UNDETERMINED
2816	GREENBACK RD	DA 51	GOODWIN HOUSE	UNDETERMINED

## ENVIRONMENT

3601		GREENBRIAR RD	DA 71	LOG HOUSE	UNDETERMINED
329		GRIFFITH AVE	DAOB 133	SIGLER HOUSE	SUGGESTED N/R GROUP
525		GRIFFITH AVE	DAOB 25	WILLIAM RHOADS HOUSE	UNDETERMINED
1844		GRIFFITH AVE	DAOB 22	ED BOSLEY HOUSE	UNDETERMINED
		GRIFFITH STATION RD	DA 380	HOUSE	UNDETERMINED
		GRIFFITH STATION RD	DA 381	HOUSE	UNDETERMINED
		GRIFFITH STATION RD	DA 383	HOUSE	UNDETERMINED
		GRIFFITH STATION RD	DA 384	HOUSE	UNDETERMINED
		GRIFFITH STATION RD	DA 385	HOUSE	UNDETERMINED
		GRIFFITH STATION RD	DA 386	HOUSE	UNDETERMINED
		GRIFFITH STATION RD	DA 399	HOUSE	UNDETERMINED
		GRIFFITH STATION RD	DA 400	HOUSE	UNDETERMINED
7437		GRIFFITH STATION RD	DA 2	BANK	UNDETERMINED
		HAGAN LN S	DA 161	A A SMITH FARMSTEAD	UNDETERMINED
1421		HAGAN LN S	DA 14	HAWKINS FARM	UNDETERMINED
1610		HAGAN LN S	DA 12	HAGAN HOUSE	UNDETERMINED
		HALE AVE	DAOB 400	HOUSE	UNDETERMINED
10243		HALL SCHOOL RD	DA 27	HOUSE	UNDETERMINED
8051		HAMILTON FERRY RD	DA 16	LITTLE FLOCK BAPTIST CHURCH	UNDETERMINED
8950		HAMILTON FERRY RD	DA 15	LOG HOUSE	UNDETERMINED
1		HANNING LNNE	DAOB 125	COAST GUARD STATION	UNDETERMINED
1600	BLK	HATHAWAY ST	DAOB 346	HOUSE	UNDETERMINED
1600	BLK	HATHAWAY ST	DAOB 347	HOUSE	UNDETERMINED
1600	BLK	HATHAWAY ST	DAOB 348	HOUSE	UNDETERMINED
6055		HAYDEN BRIDGE RD	DA 47	ST RAPHAEL CATHOLIC CHURCH	UNDETERMINED
		HAYDEN RD	DA 219	HOUSE	UNDETERMINED
		HAYDEN RD	DA 220	HOUSE	UNDETERMINED
		HIGHLAND AVE	DAOB 260	HOUSE	UNDETERMINED
		HIGHWAY 1207	DA 245	HOUSE	UNDETERMINED
		HIGHWAY 1207	DA 248	HOUSE	UNDETERMINED
		HIGHWAY 1207	DA 268	HOUSE	UNDETERMINED
		HIGHWAY 1207	DA 273	HOUSE	UNDETERMINED
		HIGHWAY 1207	DA 274	HOUSE	UNDETERMINED
		HIGHWAY 1207	DA 275	HOUSE	UNDETERMINED
		HIGHWAY 1207	DA 299	HOUSE	UNDETERMINED
415		HIGHWAY 1207	DA 249	UTICA BAPTIST CHURCH	UNDETERMINED
1820		HIGHWAY 1207	DA 58	TATE HOUSE	UNDETERMINED
2435		HIGHWAY 1207	DA 57	FITTS FARM	UNDETERMINED
7914		HIGHWAY 1389	DA 138	HUSK FAMILY HOUSE	MEETS N/R CRITERIA
9310		HIGHWAY 1389	DA 134	BETHLEHEM UNITED METHODIST CHURCH	MEETS N/R CRITERIA
10309		HIGHWAY 1389	DA 135	LOG & FRAME HOUSE	UNDETERMINED
12021		HIGHWAY 1389	DA 121	CORN CRIB	UNDETERMINED
		HIGHWAY 140 E	DA 316	BARN	UNDETERMINED
		HIGHWAY 140 E	DA 317	FARM HOUSE	UNDETERMINED
		HIGHWAY 140 E	DA 318	HOUSE	UNDETERMINED
370		HIGHWAY 140 E	DA 73	BETHLEHEM BAPTIST CHURCH	UNDETERMINED

## ENVIRONMENT

3630	HIGHWAY 140 E	DA 188	LOG HOUSE	UNDETERMINED
	HIGHWAY 140 E?	DA 189	HOUSE	UNDETERMINED
	HIGHWAY 140 E?	DA 286	HOUSE	UNDETERMINED
	HIGHWAY 140 W	DA 244	FARM HOUSE	UNDETERMINED
	HIGHWAY 140 W	DA 247	HOUSE	UNDETERMINED
	HIGHWAY 140 W	DA 253	HOUSE	UNDETERMINED
	HIGHWAY 140 W	DA 254	UTICA BAPTIST CHURCH CEMETERY	UNDETERMINED
	HIGHWAY 140 W	DA 260	SMALL BRICK BUILDING	UNDETERMINED
	HIGHWAY 140 W	DA 261	HOUSE	UNDETERMINED
	HIGHWAY 140 W	DA 262	HOUSE	UNDETERMINED
	HIGHWAY 140 W	DA 263	HOUSE	UNDETERMINED
	HIGHWAY 140 W	DA 264	HOUSE	UNDETERMINED
	HIGHWAY 140 W	DA 265	HOUSE	UNDETERMINED
	HIGHWAY 140 W	DA 266	HOUSE	UNDETERMINED
	HIGHWAY 140 W	DA 269	HOUSE	UNDETERMINED
	HIGHWAY 140 W	DA 270	HOUSE	UNDETERMINED
	HIGHWAY 140 W	DA 271	HOUSE	UNDETERMINED
	HIGHWAY 140 W	DA 272	HOUSE	UNDETERMINED
	HIGHWAY 140 W	DA 287	HOUSE	UNDETERMINED
	HIGHWAY 140 W	DA 288	HOUSE	UNDETERMINED
	HIGHWAY 140 W	DA 289	HOUSE	UNDETERMINED
	HIGHWAY 140 W	DA 290	COMMERCIAL BUILDING	UNDETERMINED
	HIGHWAY 140 W	DA 291	HOUSE	UNDETERMINED
	HIGHWAY 140 W	DA 292	CHURCH	UNDETERMINED
	HIGHWAY 140 W	DA 293	HOUSE	UNDETERMINED
	HIGHWAY 140 W	DA 294	HOUSE	UNDETERMINED
	HIGHWAY 140 W	DA 295	HOUSE	UNDETERMINED
	HIGHWAY 140 W	DA 296	HOUSE	UNDETERMINED
	HIGHWAY 140 W	DA 297	HOUSE	UNDETERMINED
	HIGHWAY 140 W	DA 298	HOUSE	UNDETERMINED
	HIGHWAY 140 W	DA 300	LOG HOUSE	UNDETERMINED
231	HIGHWAY 140 W	DA 267	UTICA ELEMENTARY SCHOOL	UNDETERMINED
309	HIGHWAY 140 W	DA 64	BANK BUILDING	UNDETERMINED
341	HIGHWAY 140 W	DA 63	TWIN OAKS HOUSE	UNDETERMINED
	HIGHWAY 142	DA 457	HOUSE	UNDETERMINED
	HIGHWAY 142	DA 458	HOUSE	UNDETERMINED
	HIGHWAY 142	DA 459	HOUSE	UNDETERMINED
	HIGHWAY 142	DA 460	HOUSE	UNDETERMINED
	HIGHWAY 142	DA 461	HOUSE	UNDETERMINED
1950	HIGHWAY 142	DA 87	HUDDLESTON HOUSE	UNDETERMINED
2420	HIGHWAY 142	DA 88	KIRK-HAZELBRIG HOUSE	UNDETERMINED
2946	HIGHWAY 142	DA 86	BETHABARA BAPTIST CHURCH	UNDETERMINED
	HIGHWAY 144	DA 212	BARN	UNDETERMINED
	HIGHWAY 144	DA 213	COMMERCIAL BUILDING	UNDETERMINED
	HIGHWAY 144	DA 214	COMMERCIAL BUILDING	UNDETERMINED
	HIGHWAY 144	DA 221	HOUSE	UNDETERMINED

## ENVIRONMENT

	HIGHWAY 144	DA 222	HOUSE	UNDETERMINED
	HIGHWAY 144	DA 223	HOUSE	UNDETERMINED
	HIGHWAY 144	DA 224	HOUSE	UNDETERMINED
	HIGHWAY 144	DA 225	HOUSE	UNDETERMINED
	HIGHWAY 144	DA 226	HOUSE	UNDETERMINED
	HIGHWAY 144	DA 227	HOUSE	UNDETERMINED
	HIGHWAY 144	DA 228	HOUSE	UNDETERMINED
4812	HIGHWAY 144	DA 01	REID'S ORCHARD (BARN, HOUSES) (SEE DA 212)	UNDETERMINED
5620	HIGHWAY 144	DA 131	THRUSTON ELEMENTARY SCHOOL	UNDETERMINED
5785	HIGHWAY 144	DA 132	THROCKMORTON HOUSE	MEETS N/R CRITERIA
6351	HIGHWAY 144	DA 127	ABE BARTON LOG HOUSE	UNDETERMINED
9515	HIGHWAY 144	DA 125	ST WILLIAM CATHOLIC CHURCH	UNDETERMINED
9520	HIGHWAY 144	DA 126	ST WILLIAM SCHOOL	UNDETERMINED
9525	HIGHWAY 144	DA 124	CATHOLIC RECTORY	UNDETERMINED
9768	HIGHWAY 144	DA 123	SHED	UNDETERMINED
9964	HIGHWAY 144	DA 122	KNOTTS FARM	UNDETERMINED
174	HIGHWAY 1554	DA 6	STANLEY CEMETERY	UNDETERMINED
3083	HIGHWAY 1554	DA 36	SORGHO BAPTIST CHURCH	UNDETERMINED
7919	HIGHWAY 258	DA 26	CALHOUN HOUSE	UNDETERMINED
1309	HIGHWAY 279 N	DA 18	CHURCH	UNDETERMINED
1700	HIGHWAY 279 N	DA 17	TOBACCO BARN	UNDETERMINED
1525	HIGHWAY 279 S	DA 37	HOUSE	UNDETERMINED
9821	HIGHWAY 2830	DA 147	PERKINS-WILHOYT HOUSE	UNDETERMINED
5955	HIGHWAY 405	DA 140	JUSTE NICOLA VAIRIN HOUSE	UNDETERMINED
6427	HIGHWAY 405	DA 141	SENATOR THOMAS C MCCREERY HOUSE	MEETS N/R CRITERIA
6961	HIGHWAY 405	DA 142	THOMAS CLAY HOUSE	UNDETERMINED
10050	HIGHWAY 405	DA 154	HOUSE	UNDETERMINED
10091	HIGHWAY 405	DA 153	MACEO CHRISTIAN CHURCH	UNDETERMINED
10119	HIGHWAY 405	DA 151	S & S MARKET	UNDETERMINED
10141	HIGHWAY 405	DA 150	MACEO POST OFFICE	UNDETERMINED
9700	HIGHWAY 456	DA 28	PANTHER CREEK TRUSS BRIDGE	UNDETERMINED
7905	HIGHWAY 500	DA 33	ST ALPHONSUS PARISH CHURCH & CEMETARY	UNDETERMINED
<b>7905</b>	<b>HIGHWAY 500</b>	<b>DA 162</b>	<b>THOMPSON AND POWELL MARTYRS MONUMENT</b>	<b>NATIONAL REGISTER</b>
	HIGHWAY 54	DA 239	HOUSE	UNDETERMINED
	HIGHWAY 54	DA 240	HOUSE	UNDETERMINED
	HIGHWAY 54	DA 241	HOUSE	UNDETERMINED
	HIGHWAY 54	DA 455	COMMERCIAL GARAGE (AUTO MECHANIC)	UNDETERMINED
	HIGHWAY 54	DA 456	HOUSE	UNDETERMINED
4115	HIGHWAY 54	DA 107	PURDY HOUSE	UNDETERMINED
4670	HIGHWAY 54	DA 105	HOUSE	UNDETERMINED
5750	HIGHWAY 54	DA 104	BRACKINS KENNELS SIGN	UNDETERMINED
10167	HIGHWAY 54	DA 92	WHITESVILLE BAPTIST CHURCH	UNDETERMINED
10184	HIGHWAY 54	DA 91	JAMES L STINNETT HOUSE	UNDETERMINED
3201	HIGHWAY 554	DA 55	HARRY MOSLEY HOUSE	UNDETERMINED
0	HIGHWAY 56	DAOB 150	PLEASANT GROVE SCHOOL	UNDETERMINED

# ENVIRONMENT

4800	HIGHWAY 56	DA 42	CARLIN-BARTLETT HOUSE	UNDETERMINED
5664	HIGHWAY 56	DA 41	PLEASANT GROVE BAPTIST CHURCH	UNDETERMINED
5672	HIGHWAY 56	DA 54	CALHOUN HOUSE	UNDETERMINED
5712	HIGHWAY 56	DA 40	SORGHO SCHOOL	UNDETERMINED
7232	HIGHWAY 56	DA 35	ST MARY MAGDALINE CATHOLIC CHURCH	UNDETERMINED
9376	HIGHWAY 56	DA 30	RINEY HOUSE	UNDETERMINED
	HIGHWAY 762	DA 158	KY 762 BRIDGE OVER S FORK OF PANTHER (DEMO '84)	<b>DEMO FR EA,EK,EO</b>
6800	HIGHWAY 762	DA 100	ZEDA CAMP HOUSE	UNDETERMINED
8204	HIGHWAY 762	DA 85	LOG SHED	UNDETERMINED
4195	HIGHWAY 764	DA 77	PLEASANT RIDGE BAPTIST CHURCH	UNDETERMINED
10125	HIGHWAY 764	DA 90	HELM-KINDLER	UNDETERMINED
7719	HIGHWAY 81	DA 53	CLARK FAMILY COMPLEX	UNDETERMINED
9910	HIGHWAY 81	DA 52	MT PLEASANT CUMBERLAND PRESBYTERIAN CHURCH	UNDETERMINED
10341	HIGHWAY 81	DA 50	CRAVENS HOUSE	UNDETERMINED
10517	HIGHWAY 81	DA 49	GLENVILLE BAPTIST CHURCH & CEMETARY	UNDETERMINED
7048	HIGHWAY 815	DA 48	THOMPSON-CLAYTON HOUSE	UNDETERMINED
	HIGHWAY 951	DA 167	HOUSE	UNDETERMINED
645	HOCKER ST	DAOB 390	HOUSE	UNDETERMINED
706	HOCKER ST	DAOB 391	HOUSE	UNDETERMINED
1525	HUGHES AVE	DAOB 237	HOUSE	UNDETERMINED
	<b>ICELAND RD</b>	<b>DA X 39</b>	<b>ARCHEOLOGICAL SITE 15 DA 39</b>	<b>NATIONAL REGISTER</b>
230	J R MILLER BLVD	DAOB 82	FIRST BAPTIST CHURCH	N/R DISTRICT NON-CONTRIB.
<b>817</b>	<b>J R MILLER BLVD</b>	<b>DAOB 48</b>	<b>WAREHOUSE</b>	<b>DEMOLISHED</b>
5455	JACK HINTON RD	DA 117	WATT TAYLOR	UNDETERMINED
8171	JACK HINTON RD	DA 242	HOUSE	UNDETERMINED
10311	JACKSON RD N	DA 59	BURNS HOUSE	MEETS N/R CRITERIA
10840	BLK JACKSON RD N	DA 160	LOG HOUSE ON ADOLPHA MORRIS FARM	UNDETERMINED
<b>9916</b>	<b>JOHNSON RD</b>	<b>DA 79</b>	<b>LOG SHEEP BARN</b>	<b>DEMOLISHED</b>
<b>5245</b>	<b>JONES RD</b>	<b>DA 133</b>	<b>WILLOW HILL (JESSE JONES HOUSE)</b>	<b>NATIONAL REGISTER</b>
10038	KELLY CEMETERY RD	DA 146	HANES HOUSE (HAWES?)	MEETS N/R CRITERIA
8300	LAKETOWN RD	DA 1	MILES FARM	UNDETERMINED
	LEITCHFIELD RD	DAOB 249	COMMERCIAL BUILDING	UNDETERMINED
345	LEITCHFIELD RD	DAOB 44	WAREHOUSE	UNDETERMINED
533	LEITCHFIELD RD	DAOB 250	HOUSE	UNDETERMINED
535	LEITCHFIELD RD	DAOB 251	HOUSE	UNDETERMINED
540	LEITCHFIELD RD	DAOB 256	HOUSE	UNDETERMINED
1029	LEITCHFIELD RD	DAOB 43	HOUSE	UNDETERMINED
<b>1301</b>	<b>LEITCHFIELD RD</b>	<b>DAOB 11</b>	<b>FELIX GRIMES HOUSE</b>	<b>DEMOLISHED FR N/R</b>
1817	LEITCHFIELD RD	DAOB 15	HOUSE	UNDETERMINED
539	LETICHFIELD RD	DAOB 252	HOUSE	UNDETERMINED
1906	LEXINGTON AVE	DAOB 24	HENRY OBRIEN	UNDETERMINED
1601	BLK LOCK AVE	DA 210	OHIO RIVER LOCK AND DAM # 46	UNDETERMINED
519	LOCUST ST	DAOB 110	STIRMANS FOLLY	REJECTED FOR N/R
520	LOCUST ST	DAOB 111	WHITE HOUSE	UNDETERMINED
614	LOCUST ST	DAOB 112	ST STEPHENS CHURCH	MEETS N/R CRITERIA

## ENVIRONMENT

800		LOCUST ST	DAOB 113	HOUSE	UNDETERMINED
401	BLK	LUCAS AVE	DAOB 370	HOUSE	UNDETERMINED
402		LUCAS ST	DAOB 360	HOUSE	UNDETERMINED
1014		LYDDANE BRIDGE RD	DA 38	BISHOP HOUSE	UNDETERMINED
		MACEDONIA RD	DA 164	BARN	UNDETERMINED
6501		MACEDONIA RD	DA 46	HOUSE LOG	UNDETERMINED
6731		MACEDONIA RD	DA 45	NEW MACEDONIA G B CHURCH	UNDETERMINED
10510		MAIN CROSS ST	DA 97	ST MARYS SCHOOL	MEETS N/R CRITERIA
10534		MAIN CROSS ST	DA 165	ST MARY OF THE WOODS CHURCH	UNDETERMINED
6092		MAIN ST	DA 19	CASH CREEK	UNDETERMINED
6104		MAIN ST	DA 20	CALHOUNS MARKET-GENERAL MERCHANDISE	UNDETERMINED
6206		MAIN ST	DA 22	SPALLING-MCCARTY HOUSE	UNDETERMINED
6230		MAIN ST	DA 24	TROGDEN HOUSE	UNDETERMINED
9945		MAIN ST	DA 96	WHITESVILLE CHRISTIAN CHURCH	UNDETERMINED
10068		MAIN ST	DA 95	ROWLAND SHOPPING CENTER	UNDETERMINED
10077		MAIN ST	DA 94	EVANS HOUSE	UNDETERMINED
10100		MAIN ST	DA 93	WHITESVILLE CITY HALL	UNDETERMINED
320		MAPLE AVE	DAOB 23	ALEXANDER HILL HOUSE	UNDETERMINED
1870		MARKSBERRY SPUR	DA 56	HOUSE	UNDETERMINED
10385		MCCAMISH RD	DA 111	HOUSE	UNDETERMINED
10781		MCCAMISH RD	DA 110	HOUSE	MEETS N/R CRITERIA
2230		MCCAHAN RD	DA 70	LOG HOUSE	UNDETERMINED
		MILL ST	DA 251	HOUSE	UNDETERMINED
		MILL ST	DA 252	SERVICE GARAGE	UNDETERMINED
		MILL ST	DA 256	HOUSE	UNDETERMINED
		MILL ST	DA 257	HOUSE	UNDETERMINED
		MILL ST	DA 258	HOUSE	UNDETERMINED
		MILL ST	DA 259	HOUSE	UNDETERMINED
		MILL ST	DA 276	HOUSE	UNDETERMINED
		MILL ST	DA 278	HOUSE	UNDETERMINED
		MILL ST	DA 280	HOUSE	UNDETERMINED
		MILL ST	DA 281	HOUSE	UNDETERMINED
		MILL ST	DA 282	HOUSE	UNDETERMINED
10800	BLK	MILL ST	DA 279	HOUSE	UNDETERMINED
1510		MILLER COURT	DAOB 141	MORRISON HOUSE	SUGGESTED N/R GROUP
1515		MILLER COURT	DAOB 137	ALFORD HOUSE	SUGGESTED N/R GROUP
1520		MILLER COURT	DAOB 140	COX HOUSE	SUGGESTED N/R GROUP
1525		MILLER COURT	DAOB 146	STIMSON HOUSE	SUGGESTED N/R GROUP
1528		MILLER COURT	DAOB 139	HORNER HOUSE	SUGGESTED N/R GROUP
1529		MILLER COURT	DAOB 145	TRIPLETT HOUSE	SUGGESTED N/R GROUP
1531		MILLER COURT	DAOB 144	TRIPLETT HOUSE	SUGGESTED N/R GROUP
1539		MILLER COURT	DAOB 143	THOMPSON HOUSE	SUGGESTED N/R GROUP
1542		MILLER COURT	DAOB 138	SMITH HOUSE	SUGGESTED N/R GROUP
4839		MILLERS MILL RD	DA 106	MACEDONIA BAPTIST CHURCH CEMETERY	UNDETERMINED
7681		MONARCH RD	DA 115	HOUSE	UNDETERMINED
8078		MONARCH RD	DA 116	CECIL HOUSE	UNDETERMINED

# ENVIRONMENT

142	MURPHY RD	DA 9	JETT SIMON	UNDETERMINED
1500	N HIGHLAND AVE	DAOB 10	LE VEGA CLEMENTS HOUSE	NATIONAL REGISTER
	OLD HARTFORD RD	DA 159	S FORK PANTHER CREEK BRIDGE	DET. ELIG. BY N/R KEEPER
	OLD HARTFORD RD	DA 178	HOUSE	UNDETERMINED
1300	OLD HARTFORD RD	DAOB 13	ROSE HILL CEMETERY	UNDETERMINED
2301	OLD HARTFORD RD	DAOB 14	ELMWOOD CEMETERY	MEETS N/R CRITERIA
3301	OLD HARTFORD RD	DAOB 6	G E TRADEMARK WATER TANK	UNDETERMINED
3940	OLD HARTFORD RD	DAOB 5	HORSE MAILBOX	UNDETERMINED
8700	OLD HARTFORD RD	DA 183	HOUSE	UNDETERMINED
8919	OLD HARTFORD RD	DA 182	HOUSE	UNDETERMINED
8949	OLD HARTFORD RD	DA 181	HOUSE	UNDETERMINED
9325	OLD HARTFORD RD	DA 180	HOUSE	UNDETERMINED
9365	OLD HARTFORD RD	DA 179	HOUSE	UNDETERMINED
	OLD HIGHWAY 54	DA 422	HOUSE	UNDETERMINED
	OLD HIGHWAY 54	DA 423	HOUSE	UNDETERMINED
	OLD HIGHWAY 54	DA 424	HOUSE	UNDETERMINED
	OLD HIGHWAY 54	DA 425	HOUSE	UNDETERMINED
	OLD HIGHWAY 54	DA 426	HOUSE	UNDETERMINED
	OLD HIGHWAY 54	DA 427	HOUSE	UNDETERMINED
	OLD HIGHWAY 54	DA 428	HOUSE	UNDETERMINED
	OLD HIGHWAY 54	DA 429	HOUSE	UNDETERMINED
	OLD HIGHWAY 54	DA 430	HOUSE	UNDETERMINED
	OLD HIGHWAY 54	DA 431	HOUSE	UNDETERMINED
	OLD HIGHWAY 54	DA 432	HOUSE	UNDETERMINED
	OLD HIGHWAY 54	DA 433	HOUSE	UNDETERMINED
	OLD HIGHWAY 54	DA 434	HOUSE	UNDETERMINED
	OLD HIGHWAY 54	DA 435	HOUSE	UNDETERMINED
	OLD HIGHWAY 54	DA 436	COMMERCIAL BUILDING	UNDETERMINED
	OLD HIGHWAY 54	DA 437	HOUSE	UNDETERMINED
	OLD HIGHWAY 54	DA 438	HOUSE	UNDETERMINED
	OLD HIGHWAY 54	DA 439	HOUSE	UNDETERMINED
	OLD HIGHWAY 54	DA 440	HOUSE	UNDETERMINED
	OLD HIGHWAY 54	DA 441	PHILPOT SCHOOL	UNDETERMINED
	OLD HIGHWAY 54	DA 442	HOUSE	UNDETERMINED
	OLD HIGHWAY 54	DA 443	GENERAL STORE	UNDETERMINED
	OLD HIGHWAY 54	DA 444	HOUSE	UNDETERMINED
	OLD HIGHWAY 54	DA 445	HOUSE	UNDETERMINED
	OLD HIGHWAY 54	DA 446	HOUSE	UNDETERMINED
	OLD HIGHWAY 54	DA 447	HOUSE	UNDETERMINED
	OLD HIGHWAY 54	DA 448	HOUSE	UNDETERMINED
	OLD HIGHWAY 54	DA 449	HOUSE	UNDETERMINED
	OLD HIGHWAY 54	DA 450	HOUSE	UNDETERMINED
	OLD HIGHWAY 54	DA 451	HOUSE	UNDETERMINED
	OLD HIGHWAY 54	DA 452	HOUSE	UNDETERMINED
	OLD HIGHWAY 54	DA 453	HOUSE	UNDETERMINED
	OLD HIGHWAY 54	DA 454	COMM/PROFESSIONAL/OFFICE	UNDETERMINED
6320	OLD HIGHWAY 54	DA 101	DAWSON BAPTIST CHURCH	UNDETERMINED



# ENVIRONMENT

8071		OLD HIGHWAY 54	DA 102	FAIR FOREST CAMP-PLASTER ROOSTER	UNDETERMINED
		PEARL ST	DAOB 258	HOUSE	UNDETERMINED
		PEARL ST	DAOB 259	HOUSE	UNDETERMINED
		PEARL ST	DAOB 299	COMMERCIAL GARAGE	UNDETERMINED
		PEARL ST	DAOB 300	HOUSE	UNDETERMINED
		PEARL ST	DAOB 301	HOUSE	UNDETERMINED
		PEARL ST	DAOB 302	HOUSE	UNDETERMINED
		PEARL ST	DAOB 303	COMMERCIAL BUILDING	UNDETERMINED
1421		PEARL ST	DAOB 45	HOUSE	UNDETERMINED
1600	BLK	PEARL ST	DAOB 309	COMMERCIAL BUILDING	UNDETERMINED
1601	BLK	PEARL ST	DAOB 310	HOUSE	UNDETERMINED
200		PHILLIPS CT		HOUSE (PHILLIPS CT NR HIST DIST)	N/R DISTRICT CONTRI. SITE
201		PHILLIPS CT		HOUSE (PHILLIPS CT NR HIST DIST)	N/R DISTRICT CONTRI. SITE
202		PHILLIPS CT		HOUSE (PHILLIPS CT NR HIST DIST)	N/R DISTRICT CONTRI. SITE
203		PHILLIPS CT		HOUSE (PHILLIPS CT NR HIST DIST)	N/R DISTRICT CONTRI. SITE
205		PHILLIPS CT		HOUSE (PHILLIPS CT NR HIST DIST)	N/R DISTRICT CONTRI. SITE
206		PHILLIPS CT		HOUSE (PHILLIPS CT NR HIST DIST)	N/R DISTRICT CONTRI. SITE
207		PHILLIPS CT		HOUSE (PHILLIPS CT NR HIST DIST)	N/R DISTRICT CONTRI. SITE
210		PHILLIPS CT		HOUSE (PHILLIPS CT NR HIST DIST)	N/R DISTRICT CONTRI. SITE
717		PLEASANT VALLEY RD	DA 157	HAPHAZARD	NATIONAL REGISTER
2224		PLEASANT VALLEY RD	DA 129	J W EDMOND FIELDS FARM	UNDETERMINED
502	-514	PLUM ST	DAOB 120	ROW OF HOUSES	DEMOLISHED
618		POINDEXTER ST	DAOB 398	HOUSE	UNDETERMINED
		POPLAR LOG BRIDGE RD	DA 177	TOWNSLEY FAMILY CEMETERY	UNDETERMINED
4225		POPLAR LOG BRIDGE RD	DA 192	HOUSE	UNDETERMINED
4244		POPLAR LOG BRIDGE RD	DA 83	BREY HOUSE	DEMOLISHED
4801		POPLAR LOG BRIDGE RD	DA 84	BOLING SISTERS	UNDETERMINED
		RATCLIFF RD	DA 313	BARN	UNDETERMINED
		RATCLIFF RD	DA 314	BARN	UNDETERMINED
		RATCLIFF RD	DA 315	BARN WITH ATTACHED EQUIPMENT SHED	UNDETERMINED
1929		RAY RD	DA 139	BLACKFORD CREEK BRIDGE	DET. ELIG. BY N/R KEEPER
10200		RED HILL-MAXWELL RD	DA 74	HOUSE	UNDETERMINED
		REID RD	DA 215	HOUSE	UNDETERMINED
		REID RD	DA 216	HOUSE	UNDETERMINED
		REID RD	DA 217	HOUSE	UNDETERMINED
		REID RD	DA 218	HOUSE	UNDETERMINED
		REID RD	DA 232	HOUSE	UNDETERMINED
2000		REID RD	DA 128	NEWTON HOUSE	UNDETERMINED
4100		RONNIE LAKE RD	DA 78	ALLEN JOHNSON HOUSE	UNDETERMINED
9138		SACRA DR	DA 152	MACEO METHODIST CHURCH	UNDETERMINED
9839		SANDS RD	DA 194	FARM	UNDETERMINED
8104		SAUER LN	DA 13	SAUER HOUSE	UNDETERMINED
10235		SCYTHIA RD	DA 136	GRAVES HOUSE	UNDETERMINED
		SHORT ST	DA 387	HOUSE	UNDETERMINED
		SHORT ST	DA 388	HOUSE	UNDETERMINED
		SHORT ST	DA 389	HOUSE	UNDETERMINED

# ENVIRONMENT

8234		SHORT STATION RD	DA 243	WOODLAND FARMS (HOUSE)	UNDETERMINED
		SKINNER LN	DA 250	HOUSE	UNDETERMINED
		SKINNER LN	DA 277	HOUSE	UNDETERMINED
		SKINNER LN	DA 283	HOUSE	UNDETERMINED
		SKINNER LN	DA 284	HOUSE	UNDETERMINED
		SKINNER LN	DA 285	HOUSE	UNDETERMINED
<b>4005</b>		<b>SOUTH HAMPTON RD</b>	<b>DA 118</b>	<b>MCKAY/THORNBERRY HOUSE</b>	<b>NATIONAL REGISTER</b>
209	-213	ST ANN ST	DAOB 186	PARKING LOT	UNDETERMINED
212		ST ANN ST	DAOB 88	DAVISS CO COURTHOUSE	N/R DISTRICT NON-CONTRIB.
212		ST ANN ST	DAOB 88	DAVISS COUNTY COURTHOUSE SQUARE	N/R DISTRICT CONTRI. SITE
<b>212</b>		<b>ST ANN ST</b>	<b>DAOB 148</b>	<b>CONFEDERATE MONUMENT</b>	<b>NATIONAL REGISTER</b>
<b>215</b>		<b>ST ANN ST</b>	<b>DAOB 185</b>	<b>COMMERCIAL BUILDING</b>	<b>DEMO FR N/R DIST NON-C.</b>
221		ST ANN ST	DAOB 184	COMMERCIAL BUILDING	N/R DISTRICT CONTRI. SITE
223	-225	ST ANN ST	DAOB 89	COMMERCIAL BUILDING	N/R DISTRICT CONTRI. SITE
227		ST ANN ST	DAOB 183	MASONIC TEMPLE	N/R DISTRICT CONTRI. SITE
310		ST ANN ST	DAOB 200	PARKING LOT	UNDETERMINED
324	-326	ST ANN ST	DAOB 199	COMMERICAL BUILDING (& DIC 124)	N/R DISTRICT CONTRI. SITE
426		ST ANN ST	DAOB 59	CENTRAL PRESBYTERIAN CHURCH	UNDETERMINED
610	, 614-616	ST ANN ST	DAOB 54	SERIES OF BLDGS	UNDETERMINED
1200		ST ANN ST		HOUSE (JZ MOORE NR+LOC DIST)	N/R DISTRICT CONTRI. SITE
1201		ST ANN ST		HOUSE (JZ MOORE NR+LOC DIST)	N/R DISTRICT CONTRI. SITE
1205		ST ANN ST		HOUSE (JZ MOORE NR+LOC DIST)	N/R DISTRICT CONTRI. SITE
1206		ST ANN ST		HOUSE (ALTERED/DISTRICT INTRUSION) (JZ MOORE NR+LOC DIST)	N/R DISTRICT NON-CONTRIB.
1207		ST ANN ST		HOUSE (LESS THAN 50 YRS IN 1985) (JZ MOORE NR+LOC DIST)	N/R DISTRICT NON-CONTRIB.
1210		ST ANN ST		HOUSE (JZ MOORE NR+LOC DIST)	N/R DISTRICT CONTRI. SITE
1214		ST ANN ST		HOUSE (CONTEMPORARY) (JZ MOORE NR+LOC DIST)	N/R DISTRICT NON-CONTRIB.
1215		ST ANN ST		HOUSE (JZ MOORE NR+LOC DIST)	N/R DISTRICT CONTRI. SITE
1219		ST ANN ST		HOUSE (JZ MOORE NR+LOC DIST)	N/R DISTRICT CONTRI. SITE
1220		ST ANN ST		HOUSE (JZ MOORE NR+LOC DIST)	N/R DISTRICT CONTRI. SITE
1228		ST ANN ST		HOUSE (JZ MOORE NR+LOC DIST)	N/R DISTRICT CONTRI. SITE
1229		ST ANN ST		HOUSE (JZ MOORE NR+LOC DIST)	N/R DISTRICT CONTRI. SITE
1230		ST ANN ST		HOUSE (JZ MOORE NR+LOC DIST)	N/R DISTRICT CONTRI. SITE
1231		ST ANN ST		HOUSE (JZ MOORE NR+LOC DIST)	N/R DISTRICT CONTRI. SITE
1301		ST ANN ST		HOUSE (JZ MOORE NR+LOC DIST)	N/R DISTRICT CONTRI. SITE
1304		ST ANN ST		HOUSE (CHILD DAY CARE CENTER) (JZ MOORE NR+LOC DIST)	N/R DISTRICT CONTRI. SITE
1307		ST ANN ST		HOUSE (JZ MOORE NR+LOC DIST)	N/R DISTRICT CONTRI. SITE
1311		ST ANN ST		HOUSE (JZ MOORE NR+LOC DIST)	N/R DISTRICT CONTRI. SITE
1315		ST ANN ST		HOUSE (JZ MOORE NR+LOC DIST)	N/R DISTRICT CONTRI. SITE
1316		ST ANN ST		HOUSE (JZ MOORE NR+LOC DIST)	N/R DISTRICT CONTRI. SITE
1324		ST ANN ST		HOUSE (JZ MOORE NR+LOC DIST)	N/R DISTRICT CONTRI. SITE
1325		ST ANN ST		HOUSE (JZ MOORE NR+LOC DIST)	N/R DISTRICT CONTRI. SITE
1326		ST ANN ST		HOUSE (JZ MOORE NR+LOC DIST)	N/R DISTRICT CONTRI. SITE
1329		ST ANN ST		HOUSE (JZ MOORE NR+LOC DIST)	N/R DISTRICT CONTRI. SITE
1330		ST ANN ST		HOUSE (JZ MOORE NR+LOC DIST)	N/R DISTRICT CONTRI. SITE

## ENVIRONMENT

		ST ANTHONY RD	DA 199	FARM	UNDETERMINED
		ST ANTHONY RD	DA 211	ST ANTHONY CATHOLIC CEMETERY	UNDETERMINED
110		ST ELIZABETH ST	DAOB 107	DAVIESS COUNTY JAIL	DEMO MET N/R CRITERIA
318		ST ELIZABETH ST	DAOB 135	RAY'S COTTAGE	UNDETERMINED
326		ST ELIZABETH ST	DAOB 134	MONTGOMERY HOUSE	UNDETERMINED
6119		ST LAWRENCE RD	DA 119	ST LAWRENCE CATHOLIC CHURCH & GRAVEYARD	UNDETERMINED
9273		STANLEY-BIRK CITY RD	DA 10	BIRK HOUSE	UNDETERMINED
		STONE ST	DAOB 223	HOUSE	UNDETERMINED
602		STONE ST	DAOB 227	HOUSE	UNDETERMINED
608		STONE ST	DAOB 226	HOUSE	UNDETERMINED
616		STONE ST	DAOB 225	HOUSE	UNDETERMINED
622		STONE ST	DAOB 224	HOUSE	UNDETERMINED
701		STONE ST	DAOB 228	HOUSE	UNDETERMINED
706		STONE ST	DAOB 222	HOUSE	UNDETERMINED
710		STONE ST	DAOB 221	HOUSE	UNDETERMINED
714		STONE ST	DAOB 220	HOUSE	UNDETERMINED
715		STONE ST	DAOB 229	HOUSE	UNDETERMINED
720		STONE ST	DAOB 219	HOUSE	UNDETERMINED
726		STONE ST	DAOB 218	HOUSE	UNDETERMINED
730		STONE ST	DAOB 217	HOUSE	UNDETERMINED
731		STONE ST	DAOB 230	HOUSE	UNDETERMINED
733		STONE ST	DAOB 231	HOUSE	UNDETERMINED
734		STONE ST	DAOB 216	HOUSE	UNDETERMINED
735		STONE ST	DAOB 232	HOUSE	UNDETERMINED
808		STONE ST	DAOB 215	HOUSE	UNDETERMINED
812		STONE ST	DAOB 214	HOUSE	UNDETERMINED
813		STONE ST	DAOB 233	HOUSE	UNDETERMINED
814		STONE ST	DAOB 213	HOUSE	UNDETERMINED
815		STONE ST	DAOB 234	HOUSE	UNDETERMINED
817		STONE ST	DAOB 235	HOUSE	UNDETERMINED
819		STONE ST	DAOB 236	HOUSE	UNDETERMINED
1200	BLK	SWEENEY ST	DAOB 339	HOUSE	UNDETERMINED
1400	BLK	SWEENEY ST	DAOB 320	QUONSET HUT COMMERCIAL BUILDING	UNDETERMINED
1600	BLK	SWEENEY ST	DAOB 336	COMMERCIAL GARAGE	UNDETERMINED
1626		SWEENEY ST	DAOB 338	SWEENEY STREET MISSIONARY BAPTIST CHURCH	UNDETERMINED
1700	-	SWEENEY ST	DAOB 337	QUONSET HUT	UNDETERMINED
1301		TAMARACK RD	DAOB 17	CENTURY CHRISTIAN CHURCH	UNDETERMINED
		TRIPLETT ST	DAOB 263	HOUSE	UNDETERMINED
		TRIPLETT ST	DAOB 266	HOUSE	UNDETERMINED
		TRIPLETT ST	DAOB 267	HOUSE	UNDETERMINED
		TRIPLETT ST	DAOB 268	HOUSE	UNDETERMINED
		TRIPLETT ST	DAOB 269	HOUSE	UNDETERMINED
		TRIPLETT ST	DAOB 274	HOUSE	UNDETERMINED
		TRIPLETT ST	DAOB 275	HOUSE	UNDETERMINED
		TRIPLETT ST	DAOB 276	HOUSE	UNDETERMINED
		TRIPLETT ST	DAOB 277	HOUSE	UNDETERMINED

# ENVIRONMENT

		TRIPLETT ST	DAOB 278	HOUSE	UNDETERMINED
		TRIPLETT ST	DAOB 279	HOUSE	UNDETERMINED
		TRIPLETT ST	DAOB 280	WAREHOUSE	UNDETERMINED
1300	BLK	TRIPLETT ST	DAOB 318	COMMERCIAL BUILDING	UNDETERMINED
1401	BLK	TRIPLETT ST	DAOB 317	COMMERCIAL BUILDING	UNDETERMINED
1500	BLK	TRIPLETT ST	DAOB 316	COMMERCIAL BUILDING	UNDETERMINED
1501	BLK	TRIPLETT ST	DAOB 314	COMMERCIAL BUILDING	UNDETERMINED
1600	BLK	TRIPLETT ST	DAOB 311	HOUSE	UNDETERMINED
1600	BLK	TRIPLETT ST	DAOB 312	HOUSE	UNDETERMINED
1600	BLK	TRIPLETT ST	DAOB 313	COMMERCIAL BUILDING	UNDETERMINED
1700	BLK	TRIPLETT ST	DAOB 304	HOUSE	UNDETERMINED
1700	BLK	TRIPLETT ST	DAOB 305	HOUSE	UNDETERMINED
1702		TRIPLETT ST	DAOB 308	COMMERCIAL/INDUSTRIAL BUILDING	UNDETERMINED
1751		TRIPLETT ST	DAOB 307	GAS STATION	UNDETERMINED
1816	1926	TRIPLETT ST	DAOB 21	GABES MOTEL BAR RESTAURANT SHOPPING CENTER	UNDETERMINED
10340		UPPER RIVER RD	DA 145	SCHOOL HOUSE RIVER HOUSE	UNDETERMINED
10301		US HIGHWAY	DA 187	HOUSE	UNDETERMINED
9137		US HIGHWAY 231	DA 184	HOUSE	UNDETERMINED
<b>9624</b>		<b>US HIGHWAY 231</b>	<b>DA 185</b>	<b>HOUSE</b>	<b>DEMOLISHED</b>
<b>9838</b>		<b>US HIGHWAY 231</b>	<b>DA 81</b>	<b>BARNES HOUSE</b>	<b>DEMOLISHED</b>
10100		US HIGHWAY 231	DA 186	HOUSE	UNDETERMINED
		US HIGHWAY 431	DA 193	FARM	UNDETERMINED
		US HIGHWAY 431	DA 200	BARN	UNDETERMINED
		US HIGHWAY 431	DA 255	HOUSE	UNDETERMINED
		US HIGHWAY 431	DA 301	HOUSE	UNDETERMINED
		US HIGHWAY 431	DA 302	HOUSE	UNDETERMINED
		US HIGHWAY 431	DA 303	HOUSE	UNDETERMINED
		US HIGHWAY 431	DA 304	HOUSE	UNDETERMINED
		US HIGHWAY 431	DA 305	HOUSE	UNDETERMINED
		US HIGHWAY 431	DA 306	HOUSE	UNDETERMINED
		US HIGHWAY 431	DA 307	COMMERCIAL GARAGE (FIRE DAMAGED)	UNDETERMINED
		US HIGHWAY 431	DA 308	HOUSE	UNDETERMINED
		US HIGHWAY 431	DA 309	HOUSE	UNDETERMINED
		US HIGHWAY 431	DA 310	HOUSE	UNDETERMINED
		US HIGHWAY 431	DA 311	HOUSE	UNDETERMINED
		US HIGHWAY 431	DA 312	HOUSE	UNDETERMINED
7625		US HIGHWAY 431	DA 68	SUTHERLAND SCHOOL	SUGGESTED N/R GROUP
8801		US HIGHWAY 431	DA 197	HOUSE	UNDETERMINED
8850		US HIGHWAY 431	DA 67	WILL GRIFFITH HOUSE/CRIPPLER HOUSE	UNDETERMINED
9419		US HIGHWAY 431	DA 66	LOG HOUSE	UNDETERMINED
10226		US HIGHWAY 431	DA 65	LOG CABIN	UNDETERMINED
2001		US HIGHWAY 60 E	DAOB 8	GLENMORE DISTILLERY	MEETS N/R CRITERIA
10960		US HIGHWAY 60 E	DA 155	AMOS RILEY PLANTATION/SITE OF JOSIAH HENSON HOME	REJECTED FOR N/R
		US HIGHWAY 60 W	DA 410	FRATERNAL/SOCIAL LODGE BUILDING	UNDETERMINED
		US HIGHWAY 60 W	DA 411	QUONSET HUT	UNDETERMINED

# ENVIRONMENT

		US HIGHWAY 60 W	DA 414	QUONSET HUT	UNDETERMINED
5707		US HIGHWAY 60 W	DA 201	SCALE HOUSE & OFFICE FOR GEORGE RUDY COAL MINE	UNDETERMINED
5707		US HIGHWAY 60 W	DA 202	BOILER ROOM AT GEORGE RUDY COAL MINE	UNDETERMINED
5707		US HIGHWAY 60 W	DA 203	STEAM ENGINE ROOM AT GEORGE RUDY COAL MINE	UNDETERMINED
5707		US HIGHWAY 60 W	DA 204	PUMP HOUSE & REPAIR BUILDING- GEORGE RUDY COAL MINE	UNDETERMINED
5707		US HIGHWAY 60 W	DA 205	STORAGE BUILDING AT GEORGE RUDY COAL MINE	UNDETERMINED
5707		US HIGHWAY 60 W	DA 206	PONY-MULE BARN FOR GEORGE RUDY COAL MINE	UNDETERMINED
5707		US HIGHWAY 60 W	DA 207	SAW MILL HOUSE AT GEORGE RUDY COAL MINE	UNDETERMINED
5707		US HIGHWAY 60 W	DA 208	BLACK POWDER HOUSE FOR GEORGE RUDY COAL MINE	UNDETERMINED
5707		US HIGHWAY 60 W	DA 209	POND PUMP HOUSE ATGEORGE RUDY COAL MINE	UNDETERMINED
9901		US HIGHWAY 60 W	DA 7	W A ALEXANDER GROCERY	UNDETERMINED
10501		US HIGHWAY 60 W	DA 8	MILLER HOUSE	UNDETERMINED
3225		VEACH RD	DAOB 4	THOMAS MASON BARRON HOUSE	UNDETERMINED
107		W 14TH ST		ALL WEATHER HTG & COOLING	JZ MOORE LOCAL HIST DIST
406		W 15TH ST	DAOB 147	LASWELL HOUSE	SUGGESTED N/R GROUP
500		W 15TH ST	DAOB 142	HAYNES HOUSE	SUGGESTED N/R GROUP
100		W 23RD ST	DAOB 20	BUENA VISTA BAPTIST CHURCH	UNDETERMINED
100		W 2ND ST	DAOB 171	COMMERCIAL BUILDING	N/R DISTRICT NON-CONTRIB.
101	120- 126 ALLEN ST	W 2ND ST	DAOB 93	BATES BLDG ORIGINALLY OWENSBORO SAVINGS BANK	N/R DISTRICT CONTRI. SITE
102		W 2ND ST	DAOB 170	COMMERCIAL BUILDING	N/R DISTRICT CONTRI. SITE
104	-106	W 2ND ST	DAOB 169	COMMERCIAL BUILDING	N/R DISTRICT CONTRI. SITE
105	-107	W 2ND ST	DAOB 160	COMMERCIAL BUILDING	N/R DISTRICT CONTRI. SITE
108		W 2ND ST	DAOB 168	COMMERCIAL BUILDING	N/R DISTRICT CONTRI. SITE
109		W 2ND ST	DAOB 161	COMMERCIAL BUILDING	N/R DISTRICT NON-CONTRIB.
111		W 2ND ST	DAOB 162	COMMERCIAL BUILDING	N/R DISTRICT NON-CONTRIB.
112		W 2ND ST	DAOB 92	(APEX) ARNOLD BUILDING	N/R DISTRICT CONTRI. SITE
115		W 2ND ST	DAOB 163	COMMERCIAL BUILDING	N/R DISTRICT NON-CONTRIB.
116	=118, 120, 122	W 2ND ST	DAOB 91	WERNER SMITH GLOVER BLDG	N/R DISTRICT CONTRI. SITE
117		W 2ND ST	DAOB 164	COMMERCIAL BUILDING	N/R DISTRICT NON-CONTRIB.
119		W 2ND ST	DAOB 165	COMMERCIAL BUILDING	N/R DISTRICT NON-CONTRIB.
121	-123	W 2ND ST	DAOB 166	COMMERCIAL BUILDING	N/R DISTRICT CONTRI. SITE
124	-126	W 2ND ST	DAOB 90	WALGREEN BLDG (DEMO 1990) NOW PARKING LOT	DEMOLISHED
125		W 2ND ST	DAOB 167	THE LOUISVILLE STORE	N/R DISTRICT CONTRI. SITE
311		W 2ND ST	DAOB 106	DEPT OF HUMAN RESOURCES	UNDETERMINED
625		W 2ND ST	DAOB 108	COMMERCIAL	UNDETERMINED
1025		W 2ND ST	DAOB 121	HOUSE	UNDETERMINED
1650		W 2ND ST	DAOB 124	ROBT E LEE SCHOOL	UNDETERMINED
2300		W 2ND ST	DAOB 357	YEISERS WAREHOUSE	UNDETERMINED
2731		W 2ND ST	DAOB 42	MOORMAN HOUSE	NATIONAL REGISTER
101	-103	W 3RD ST	DAOB 84	RENO BLDG/THE INQUIRER PUBLISHING CO BLDG	N/R DISTRICT CONTRI. SITE
105		W 3RD ST	DAOB 178	COMMERCIAL BUILDING	N/R DISTRICT CONTRI. SITE
107		W 3RD ST	DAOB 179	COMMERCIAL BUILDING	N/R DISTRICT CONTRI. SITE

## ENVIRONMENT

109		W 3RD ST	DAOB 180	COMMERCIAL BUILDING	N/R DISTRICT CONTRI. SITE
111		W 3RD ST	DAOB 181	COMMERCIAL BUILDING	N/R DISTRICT CONTRI. SITE
114		W 3RD ST	DAOB 85	CENTRAL BANK & TRUST CO (NOW PNC BANK)	MEETS N/R CRITERIA
115		W 3RD ST	DAOB 182	PARKING LOT	UNDETERMINED
200	202, 204	W 3RD ST	DAOB 86	BROTHERS LODGE NO 132 IOOF	NATIONAL REGISTER
208		W 3RD ST	DAOB 87	BREIDENBACH BLDG	NATIONAL REGISTER
210	-212	W 3RD ST	DAOB 187	COMMERCIAL BUILDING	N/R DISTRICT CONTRI. SITE
214	-216	W 3RD ST	DAOB 188	COMMERCIAL BUILDING	N/R DISTRICT CONTRI. SITE
218		W 3RD ST	DAOB 189	COMMERCIAL BUILDING	N/R DISTRICT CONTRI. SITE
401		W 3RD ST	DAOB 136	AMES BLDG (BURNED 1987)	DEMOLISHED FR N/R
1302		W 3RD ST	DAOB 123	HOUSE	UNDETERMINED
1330		W 3RD ST	DAOB 122	FIRST ASSEMBLY CHURCH OF GOD	UNDETERMINED
1801		W 3RD ST	DAOB 354	HOUSE	UNDETERMINED
1817		W 3RD ST	DAOB 355	APARTMENT BUILDING	UNDETERMINED
1819		W 3RD ST	DAOB 356	HOUSE	UNDETERMINED
109		W 4TH ST	DAOB 75	PUBLIC ADMINISTRATION BLDG	DEMOLISHED
201	-203	W 4TH ST	DAOB 198	COMMERCIAL BUILDING (& DIC 124)	N/R DISTRICT CONTRI. SITE
205		W 4TH ST	DAOB 197	COMMERCIAL BUILDING (& DIC 124)	N/R DISTRICT CONTRI. SITE
207		W 4TH ST	DAOB 76	OLD RIVERTOWN LAND & AUCTION CO (& DIC 124)	N/R DISTRICT CONTRI. SITE
209		W 4TH ST	DAOB 77	W B TYLER HOUSE (& DIC 124)	N/R DISTRICT CONTRI. SITE
1700		W 4TH ST	DAOB 366	HOUSE	UNDETERMINED
1704		W 4TH ST	DAOB 365	HOUSE	UNDETERMINED
1712		W 4TH ST	DAOB 364	HOUSE	UNDETERMINED
2102		W 4TH ST	DAOB 361	HOUSE	UNDETERMINED
2106		W 4TH ST	DAOB 362	HOUSE	UNDETERMINED
2110		W 4TH ST	DAOB 363	HOUSE	UNDETERMINED
407		W 5TH ST	DAOB 109	TRINITY EPISCOPAL CHURCH	NATIONAL REGISTER
1500		W 5TH ST	DAOB 129	HOUSE	UNDETERMINED
1631		W 5TH ST	DAOB 128	COMMERCIAL	UNDETERMINED
1812		W 5TH ST	DAOB 382	HOUSE	UNDETERMINED
1816		W 5TH ST	DAOB 381	HOUSE	UNDETERMINED
1830		W 5TH ST	DAOB 380	HOUSE	UNDETERMINED
1840		W 5TH ST	DAOB 127	HOUSE	UNDETERMINED
1910		W 5TH ST	DAOB 379	HOUSE	UNDETERMINED
2014		W 5TH ST	DAOB 378	HOUSE	UNDETERMINED
2101		W 5TH ST	DAOB 367	HOUSE	UNDETERMINED
2102		W 5TH ST	DAOB 377	HOUSE	UNDETERMINED
2106		W 5TH ST	DAOB 376	HOUSE	UNDETERMINED
2113		W 5TH ST	DAOB 368	HOUSE	UNDETERMINED
2115		W 5TH ST	DAOB 369	HOUSE	UNDETERMINED
2202		W 5TH ST	DAOB 375	COMMERCIAL BUILDING	UNDETERMINED
2206		W 5TH ST	DAOB 374	HOUSE	UNDETERMINED
2311		W 5TH ST	DAOB 371	HOUSE	UNDETERMINED
2407		W 5TH ST	DAOB 372	HOUSE	UNDETERMINED
2512		W 5TH ST	DAOB 373	HOUSE	UNDETERMINED
8555		W 5TH STREET RD	DA 11	LOG BARN	UNDETERMINED

## ENVIRONMENT

1817	W 6TH ST	DAOB 386	HOUSE	UNDETERMINED
2104	W 6TH ST	DAOB 387	HOUSE	UNDETERMINED
2113	W 6TH ST	DAOB 388	HOUSE	UNDETERMINED
2317	W 6TH ST	DAOB 389	HOUSE	UNDETERMINED
2011	W 7TH ST	DAOB 395	HOUSE	UNDETERMINED
2011	W 7TH ST	DAOB 396	HOUSE	UNDETERMINED
2015	W 7TH ST	DAOB 394	HOUSE	UNDETERMINED
2017	W 7TH ST	DAOB 393	HOUSE	UNDETERMINED
2314	W 7TH ST	DAOB 392	HOUSE	UNDETERMINED
2104	W 8TH ST	DAOB 401	HOUSE	UNDETERMINED
2206	W 8TH ST	DAOB 402	HOUSE	UNDETERMINED
327	W 9TH ST	DAOB 114	HOUSE	UNDETERMINED
1135	W 9TH ST	DAOB 119	J J FRIEDMANN BLDG	UNDETERMINED
<b>434</b>	<b>W HIGHLAND CT</b>	<b>DAOB 9</b>	<b>MONARCH-PAYNE HOUSE</b>	<b>NATIONAL REGISTER</b>
1110	W PARRISH AVE	DAOB 26	PARRISH HOUSE	UNDETERMINED
1500	W PARRISH AVE	DAOB 130	DR THORPE HOUSE	UNDETERMINED
1500	W PARRISH AVE	DAOB 350	HOUSE (SAME AS DAOB 130?)	UNDETERMINED
<b>1501</b>	<b>W PARRISH AVE</b>	<b>DAOB 131</b>	<b>KENTUCKY NATIONAL GUARD ARMORY</b>	<b>NATIONAL REGISTER</b>
1521	W PARRISH AVE	DAOB 352	HOUSE	UNDETERMINED
1524	W PARRISH AVE	DAOB 351	OWENSBORO CATHOLIC HIGH SCHOOL	UNDETERMINED
3220	W PARRISH AVE	DAOB 1	HOUSE	UNDETERMINED
3734	W PARRISH AVE	DA 43	ELLIOTT HOUSE	UNDETERMINED
520	WALNUT ST	DAOB 115	HOUSE	UNDETERMINED
605	WALNUT ST	DAOB 116	HOUSE	UNDETERMINED
814	WALNUT ST	DAOB 117	HOUSE	UNDETERMINED
822	WALNUT ST	DAOB 118	HOUSE	UNDETERMINED
1406	WALNUT ST	DAOB 27	HAYCRAFT HOUSE	UNDETERMINED
	WARD RD	DA 235	HOUSE	UNDETERMINED
	WARD RD	DA 236	HOUSE	UNDETERMINED
	WARD RD	DA 237	HOUSE	UNDETERMINED
8153	WARD RD	DA 234	HOUSE	UNDETERMINED
8260	WARD RD	DA 238	HOUSE	UNDETERMINED
6001	WARE RD	DA 103	JOHN KING	UNDETERMINED
2170	WESTERFIELD LN	DA 82	OWENS HOUSE	UNDETERMINED
	WIMSATT RD	DA 382	HOUSE	UNDETERMINED
7640	WINDY HILL RD	DA 114	HOUSE	UNDETERMINED
	WINKLER RD	DA 419	HOUSE	UNDETERMINED
	WINKLER RD	DA 420	HOUSE	UNDETERMINED
	WINKLER RD	DA 421	HOUSE	UNDETERMINED
700	WORTHINGTON RD	DA 39	GILLES HOUSE	UNDETERMINED
2120	WRIGHTS LANDING RD	DA 137	HORNE HOUSE	UNDETERMINED
1436	YELVINGTON-KNOTTSVILLE RD	DA 144	KENDALL FARM	UNDETERMINED

## ENVIRONMENT

### *Water Quality*

Two general types of pollution affect the quality of our water. The first, point source, enters the hydrologic system through industrial or municipal discharges. The second, non-point source pollution, enters the water system through storm water run-off: streets, buildings, farm lands, and raining sites.

Storm water effects are the greatest source of pollution for our community's water supply. Current storm water management efforts include retention or detention of storm water along with erosion control methods to limit this source of pollution.

Daviess County is fortunate in that most of the sewage transmitted through the sanitary sewer system is treated before it is released into a receiving stream. One exception to this is when a heavy rain forces an overload on the portions of the city where combined sewers (storm water and sanitary) are used. When this occurs, the bypass gates of the sewage system are forced open and sewage is temporarily dumped into the main body of water. One solution to this problem is the separation of the two systems.

Kentucky State Government through the Natural Resources and Environmental Protection Cabinet imposes water pollution standards that Daviess County must follow. Enforcement of the standards is the responsibility of the Division of Water.

The US Environmental Protection Agency and Kentucky State Government through the Natural Resources and Environmental Protection Cabinet impose drinking water quality standards that Daviess County must follow. Primary enforcement of the standards is the responsibility of the Kentucky Division of Water, as provided by the Safe Drinking Water Act, as amended by the Safe Drinking Water Act amendments of 1986.

Owensboro Municipal Utilities (OMU) operates two treatment plants that are located on US Highway 60 East. The water is collected from an aquifer, not the Ohio River, using 33 deep wells. After treatment, the water is of good quality and complies with State and Federal drinking water standards.

Wellhead protection is the prevention of groundwater contamination by management of potential contaminant sources within a designated land area around a well field. The 1986 amendments to the federal Safe Drinking Water Act require every state adopt a wellhead protection plan to protect public water supply wells and springs from contamination. In Kentucky, the Wellhead Protection Program is coordinated by the Division of Water's Groundwater Branch, and is regulated through the Water Supply Planning Regulations (401 KAR 4:220). These regulations require that every public water system utilizing groundwater have a state approved community wellhead protection plan.

In compliance with these regulations, the Green River Area Development District, with the assistance of the Daviess County Wellhead Protection Committee and Owensboro Municipal Utilities (OMU), prepared *The Daviess County Wellhead Protection Plan*. The Kentucky Division of Water on September 20, 1999 approved this Plan.

### *Air Quality*

The U.S. Environmental Protection Agency has issued primary and secondary air quality standards for six (6) criteria pollutants, which are known as the National Ambient Air Quality Standards (NAAQS). The primary standard is set at a level to provide an adequate margin of safety to protect the public health.



## ENVIRONMENT

Secondary standards are those levels of air quality that are judged necessary to protect the public welfare from any known or anticipated adverse effects of a pollutant.

The 1970 Clean Air Act requires that each state have an air pollution program. To fulfill this requirement, the Kentucky Air Pollution Control Commission adopted a program on February 15, 1972 in the form of statewide air quality regulations. Today, the Division for Air Quality within the Natural Resources and Environmental Protection Cabinet is continuing to implement the latest version of the Clean Air Act that was adopted in 1990. There have been only minor changes in the act since then.

The quality of air in Daviess County is currently monitored at two sites. Additional air monitoring sites are located in counties surrounding Daviess County to monitor the air coming into the county, as well as air exiting the metropolitan area. None of these sites currently experience high values of pollutants. Daviess County has met many of the air quality challenges presented to the area since the early 1970s. On May 1, 2012, Owensboro was rated on the AQI (Air Quality Index) as 26 for fine particulates, which means that **air quality is considered satisfactory , and air pollution poses little to no risk..** For complete data regarding air quality including emissions, odor, asbestos, air permits, haze, carbon monoxide, sulfur dioxide, mercury, hydrogen ion, particulate matter and monitoring network information, annual reports of the Kentucky Division of Air Quality can be accessed at <http://air.ky.gov>

### *Noise Control*

State standards on noise levels have not been established. The Environmental Protection Cabinet presently serves only as an advisory group to local governments seeking assistance in preparing noise ordinances for their communities. A local noise control ordinance was adopted by the City of Owensboro in October of 1999.